



National
Portrait
Gallery

**Learning at the
National Portrait Gallery**
Primary Schools' Programme
2010/2011

Take another look

Take another look

at our 2010/2011

Primary Schools' programme



Get in touch

020 7312 2483 or

education@npg.org.uk

COVER IMAGE: **Queen Elizabeth I**, (1533–1623), (detail)
Attributed to George Gower, c.1588, NPG 541

ABOVE: **Marion Collier (née Huxley)**, (1859–87), (detail) John Collier,
1883, NPG 6032

All images are © National Portrait Gallery, London,
unless otherwise indicated.

Quotes included were supplied by school teachers or
students from participating groups, 2009 and 2010.

Information is correct at time of print, however dates and
details may change. Please check www.npg.org.uk



CONTENTS

■ Welcome	2
■ Primary programmes	4
■ History	6
■ Art	12
■ Other curriculum areas	16
■ SEN schools	22
■ CPD for teachers	26
■ Videoconferencing	30
■ Resources	36
■ Exhibitions and displays	38
■ Visits and bookings	42
■ Contact us	44

Take another look at learning through portraits

Welcome to the National Portrait Gallery's programmes for primary schools for the 2010 / 2011 school year.

The National Portrait Gallery places learning at its heart. The Gallery is a national destination for learning through portraiture. Our aim is to use portraiture to increase pupils' and teachers' understanding of the men and women who have and who are contributing to the culture, identity and rich diversity of Britain.

This booklet outlines our dynamic, free, curriculum-linked learning programmes for pupils and teachers, taking inspiration from our extensive collection of portraits from 1500 to the present day. The Gallery's innovative changing programme of exhibitions and displays means there's always something new to explore. The Gallery offers unique perspectives into portraiture, showing how society in Britain has developed, and generating ideas around achievement and inspiration for all learners.

Come face-to-face with art, history and contemporary culture at the National Portrait Gallery this year.

Liz Smith

HEAD OF LEARNING
National Portrait Gallery



William Morris, (1834–1896)
(detail) Charles Fairfax Murray,
c.1870, NPG 3652



Over 500 years of art, history, biography and fame

- The Gallery was founded in 1856 to collect portraits of famous British people
- Over 1,000 portraits of men and women who have shaped British history from the Middle Ages to the present are on display at any one time
- Our collections feature more than 120,000 portraits
- Meet kings and queens, politicians and rulers, writers and artists, scientists, actors, musicians, sportspeople and business leaders

**Contact us for programmes
and bookings on 020 7312 2483
or education@npg.org.uk**

PRIMARY PROGRAMMES

Free sessions facilitated by specialist teachers and artists

The National Portrait Gallery works with primary schools in exciting ways, responding to the individual interests of classes through free ready-made and tailor-made sessions. Our specifically-designed programmes, activities and resources link to curriculum requirements for History, Art, Literacy, Science and Music, Dance and Drama.

Taught Gallery sessions and workshops for Reception to Key Stage 2 are led by our freelancer team and Gallery staff, while Videoconferencing sessions bring our Collection into your school. CPD sessions and private views give insights to temporary exhibitions and the Collection for teachers. We also extend learning through free online learning including resources and publications to support self-directed visits and classroom teaching.

Webquests are innovative problem-solving activities using nine national museum collections to foster enquiry-based learning across a number of primary curriculum areas. Suggested webquests for follow-up work are listed under session information. To access all webquests, please go to www.npg.org.uk/webquests. See page 42 for how to book your visit.

- Programmes are free of charge
- All materials are provided
- Sessions last from 90 minutes to half a day long
- Sessions can be booked whenever the necessary staff and rooms are available
- We recommend a pre-visit to see the Galleries you will be using

NEW THIS YEAR

New learning experiences for Primary classes in 2010 / 2011 include a Tudor Seafarers Videoconference for Key Stage 2 (see page 33), a 'Victorian Magic Lantern' webquest combining exploration of the science of light and the selection of significant Victorians (see pages 10 and 33), and a comprehensive online learning resource for teachers about Mary Seacole, 'Mary Seacole in Focus' which is downloadable from www.npg.org.uk/learning

Take another look at the class of 2010/2011



King Edward VI
History



Queen Elizabeth I
KS1



Mary Moser (later Lloyd)
Art



J. K. Rowling
Literacy



**Dorothy Mary
Crowfoot Hodgkin**
Science



Karl Friedrich Abel
Music / Dance / Drama

‘The knowledge and expertise giving the stories behind the paintings was fantastic, really brings it to life’.

History

Exciting sessions bring portraits to life

Discussing how portraits tell us about the past is a focus of our Primary History sessions. Experiences range from discussions to storytelling to active participation in role play, from trying on costumes to exploring drama and dance to making practical artwork in response to observation, bringing portraits to life in an imaginative way. Introducing the purpose of museums and the need to treasure the past sparks interest in younger visitors on what could be their first experience at a gallery.

King Edward VI – History

Edward VI became king at the age of nine. Here he tries to look like his father Henry VIII, but cannot match his strength and power.



King Edward VI, (1537–1555), (detail) Unknown artist, after William Scrots, c.1547 NPG 5511



The Capel Family Cornelius Johnson, c.1640, NPG 4759

Key Stage 1: Reception to Year 2

Children and Families

How do the lives of children in the past differ from today? Look at family portraits from the seventeenth century and select one child from a portrait to draw. For Nursery, Reception and Year 1, we focus on one picture and include dressing-up and posing activities.

- 1 hour to 90 minutes
- Recommended for Reception and Year 1
- Follow-up webquest: KS1 History 'Children and Families'

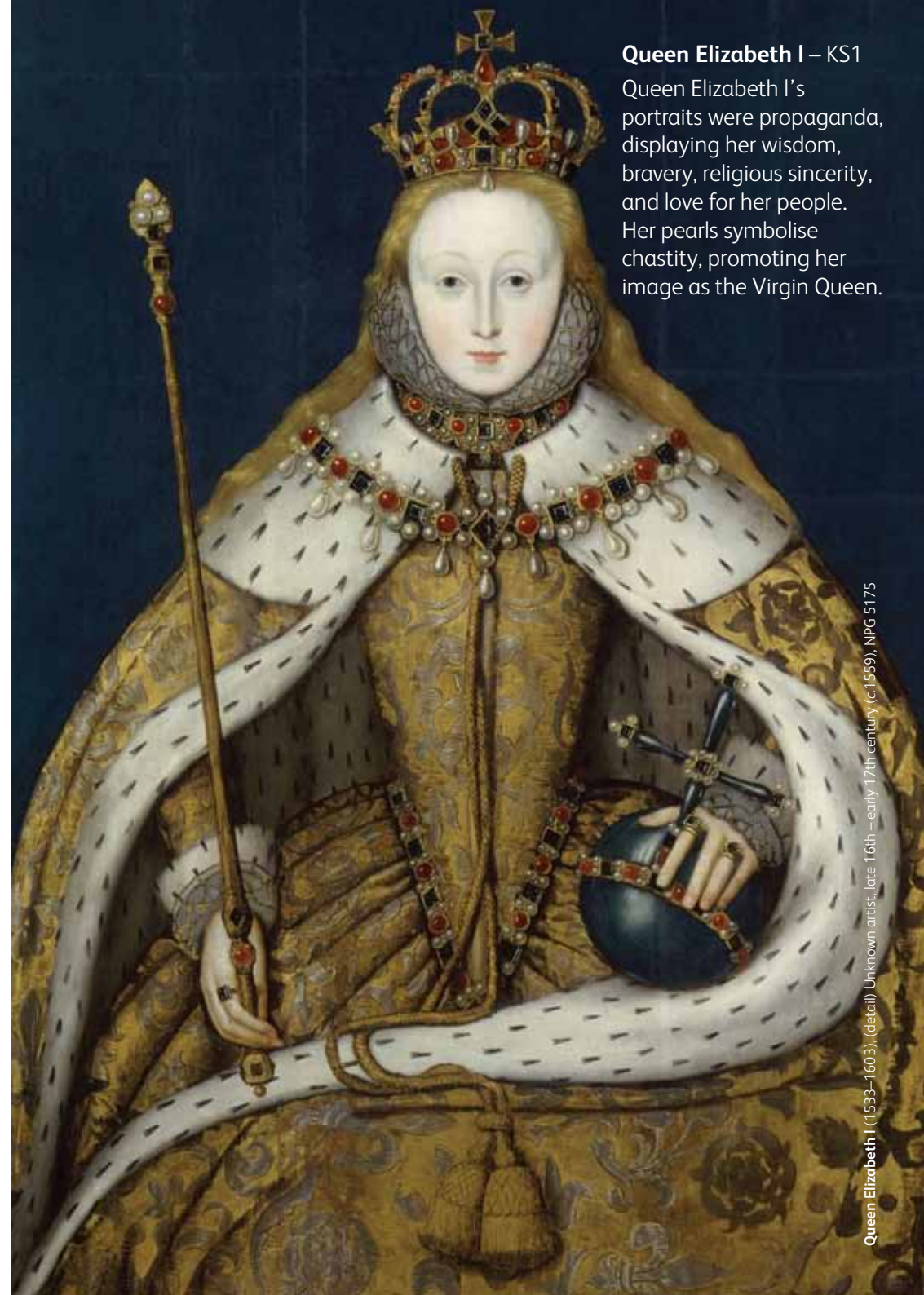
Famous People

Listen to stories about the lives of two famous men and women in the past and look at how portraits depict the story. Featuring stories about personalities including Guy Fawkes and the Gunpowder Plot, Samuel Pepys and the Great Fire of London, Florence Nightingale, Mary Seacole (Spring and Summer Terms) and Beatrix Potter.

- Recommended for Year 2
- Follow-up webquest: KS1 History 'Florence Nightingale'
- Follow-up online learning: www.fireoflondon.org.uk is an interactive website on the Great Fire of London, using museum artefacts and original documents, created by the National Portrait Gallery, the Museum of London, the London Fire Brigade and two major archives

All History gallery sessions run for 90 minutes and cater for a maximum of 30 pupils.

For programme bookings and information: 020 7312 2483 or education@npg.org.uk



Queen Elizabeth I – KS1

Queen Elizabeth I's portraits were propaganda, displaying her wisdom, bravery, religious sincerity, and love for her people. Her pearls symbolise chastity, promoting her image as the Virgin Queen.



FAR LEFT: **Queen Victoria** (1819–1901)
(detail) replica by Sir George Hayter, 1863
(1838), NPG 1250

Key Stage 2: Years 3 to 6

TUDOR TIMES

The Tudors

Using observation, discussion and drawing inspired by three to four key portraits, focus on monarchs including Henry VIII and Elizabeth I.

- Follow-up webquests: KS2 History 'Henry VIII's next wife?' and 'Painting Elizabeth I'

Tudor Costume

Discussion, dressing up and practical artwork exploring how clothes from the Tudor period are portrayed in portraits.

VICTORIAN BRITAIN

The Victorians

Investigate the lives and experiences of famous people from Victorian Britain, including Queen Victoria, Prince Albert, Florence Nightingale or selected Victorian writers.

- Follow-up webquest: KS2 History 'Victorian Magic Lantern'

Victorian Costume

How are Victorian-era clothes portrayed in portraits? Looking at four or five portraits, pupils engage in discussion, dressing-up and practical art activities.



Sir Henry Unton (1557?–1596) Unknown artist, c.1596, NPG 710

History Workshops

Henry Unton Workshop

Elizabethan Social History Interpreted in Tudor Dance for Key Stage 2

- **Nov 2010** – Mon 8 / Tues 9 / Wed 10/ Thurs 11 / Fri 12
- **Nov/Dec 2010** – Mon 29 / Tues 30 / Wed 1/ Thurs 2
- **Jan 2011** – Mon 17 / Tues 18 / Wed 19 / Thurs 20 / Fri 21
- **ALL 10.30 – 12.30**

Reconstruct the life of Elizabethan ambassador Sir Henry Unton through mime and Tudor dance. Discover fascinating aspects of Elizabethan social history, learn to dance a pavane and then use the music to mime different aspects of Unton's life. The session culminates in a performance of completed work in front of Unton's portrait in the Tudor Gallery.

- Recommended for Years 5 and 6
- Follow-up webquest: KS2 History 'Tudor Film Set'

'Totally inspired. Cherished the time to study the pictures in detail to find the hidden messages.'

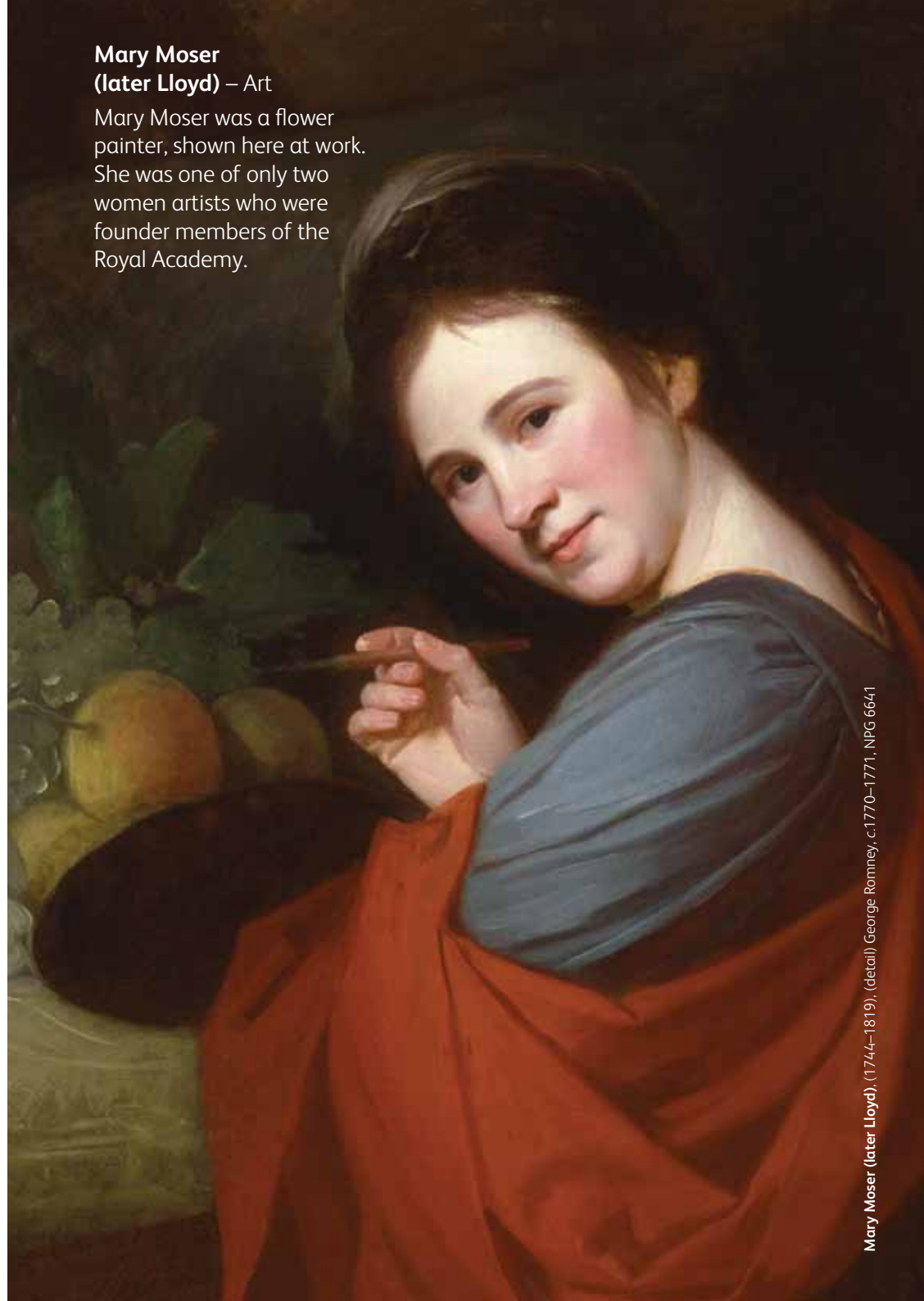
Art

Make your own portraits inspired by ours

Take a journey through our collection, directly interacting with portraiture through active participation and observation, discussion, role play and hands-on art-making activities. Our approach is to link our portraits with children's own experiences and interests, enhancing their skills, knowledge and understanding of art. Our specialist freelance team facilitate sessions, encouraging pupils to come face to face with different ideas about what portraits can be. In addition to 'ready-made' art sessions and hands-on workshops, we can also specifically tailor a session around a theme or room of your choice from our permanent Collection. We recommend that teachers integrate their visit into a sequence of portraiture-based work in school, including pre- and post-visit activities such as drawing self-portraits or working from a live model to gain confidence translating ideas to a two-dimensional surface.

Mary Moser (later Lloyd) – Art

Mary Moser was a flower painter, shown here at work. She was one of only two women artists who were founder members of the Royal Academy.



Mary Moser (later Lloyd), (1744–1819), (detail) George Romney, c.1770–1771, NPG 6641



KEY STAGE 1

Reception to Year 2

Children and Families

How are other children depicted in portraits – what did they wear, how were they posed, what were they thinking? Discuss one portrait and make drawings in response with fabric crayons. Back at school, pupils' drawings are ironed onto fabric provided by the Gallery. For Nursery, Reception and Year 1 children we focus on one artwork and include dressing up and posing activities.

- 1 hour to 90 minutes
- Follow-up webquest: KS1 Art 'Children and Families'

KEY STAGE 2

Years 3 to 6

Getting the Message

How do portraits by Reynolds, Gainsborough and their contemporaries convey messages about the sitter through clothing, pose, composition and objects? Pupils discover and discuss messages then select one work to draw using pastels.

- Follow-up webquest: KS2 Art 'Portrait Prize'



FAR LEFT: **Catherine Maria ('Kitty') Fisher** (died 1767), Nathaniel Hone, 1765, NPG 2354

LEFT: **Queen Elizabeth I** (1533–1603) (detail) Unknown artist, c.1525, NPG 2082

Styles of Contemporary Painting

Become aware of the wide range of different methods and techniques used by contemporary artists by working in the style of a selected contemporary portrait. Pupils gain the confidence to express opinions about different styles of portrait painting.

- Follow-up webquest: KS2 Art 'Painting in Style'

The Faces of Elizabeth I

Following a discussion about the Elizabethan idea of beauty, draw Queen Elizabeth I using the Tudor method of copying portraits called 'pouncing', and complete a portrait in colour.

- Recommended for Years 5 and 6
- Follow-up webquest: KS2 Art 'Painting Elizabeth I'

'Lots of "wow" factor in terms of seeing real portraits.'

Other curriculum areas

LITERACY Years 3 to 6

Literacy combines with Art and History to provide opportunities to meet portraits of classic authors from the past, explore the biographies of some famous and intriguing people and increase written skills through hands-on activities.

Past Lives:

Biography Sessions

Explore the biographies of sitters from one of the following periods: Elizabethan, Stuart (including the diaries of Samuel Pepys), Eighteenth Century, Regency or Victorian. After hearing about sitters' lives, draw directly from the portrait and plan a short biography of the selected person to write up back in school.

- Supports the Revised Literacy Framework, Year 6 Nonfiction – Unit 1: Biography and Autobiography

Authors from the Past

Older Literature

A dynamic session where pupils can examine portraits, hear book extracts and discuss the writing techniques of famous authors such as Charles Dickens, Rudyard Kipling, Robert Louis Stevenson, Beatrix Potter and, when available, J.K. Rowling for a modern comparison. Drawing directly from an author's portrait, pupils discuss their response to these works today.

- Supports the Revised Literacy Framework, Year 5 Narrative – Unit 4: Older Literature
- Follow-up webquest: KS2 English 'Just So Stories'

These **Literacy** gallery sessions run for 90 minutes and cater for a maximum of 30 students.



J. K. Rowling – Literacy

J. K. Rowling shot to fame with her books about the boy wizard Harry Potter. Now made into films, they are well-known throughout the world.



Mary Nevill, Lady Dacre; Gregory Fiennes, 10th Baron Dacre, (detail) Hans Eworth, 1559, NPG 6855

SCIENCE Years 3 to 6

Link Science with aspects of portraiture and Art by investigating different properties of materials and discover how items we take for granted today were made in pre-industrial Britain.

Fabric of Life

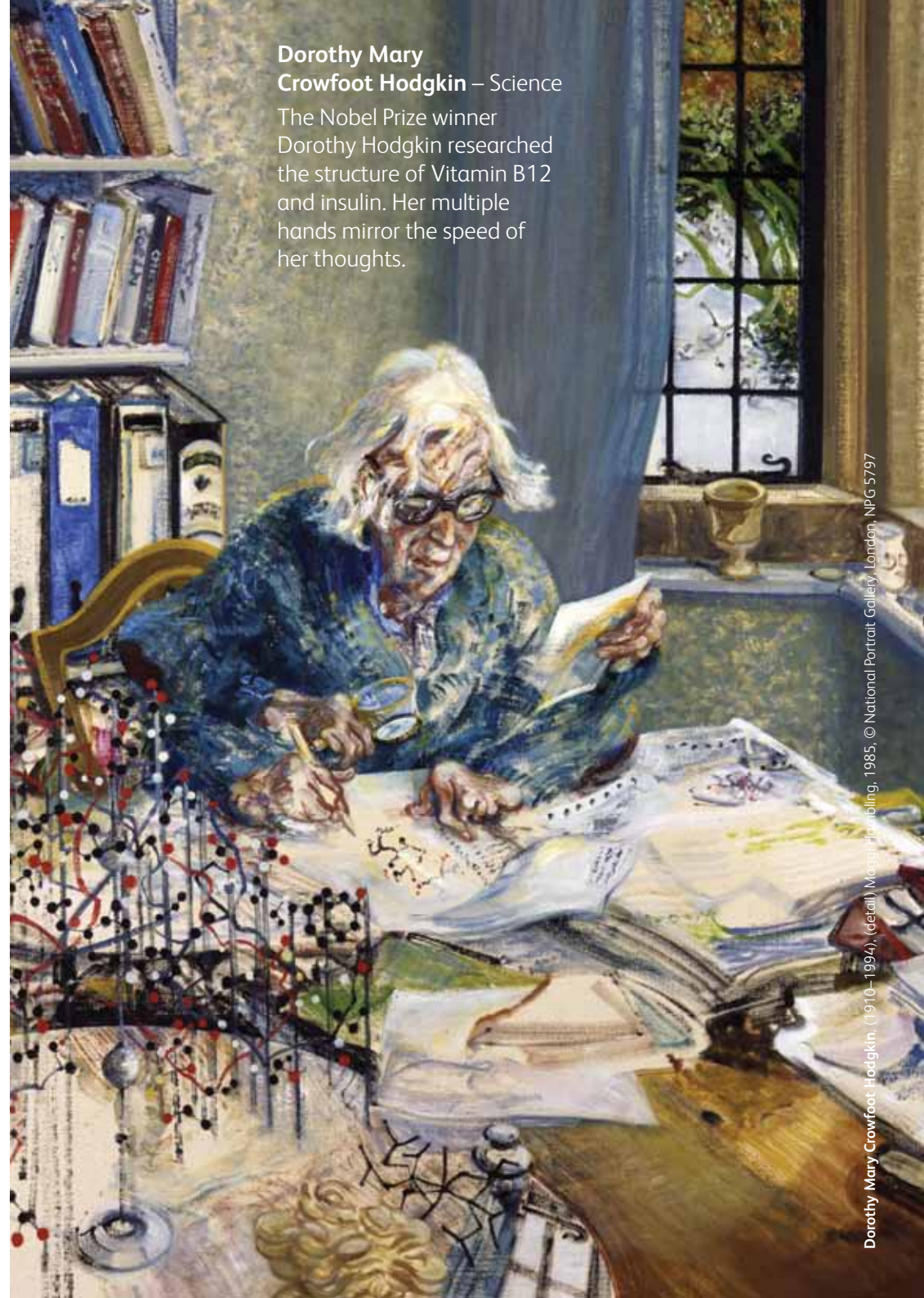
Explore how natural fabrics such as wool, silk and linen were represented in portraiture, through handling sessions with fabric samples, comparisons between different textures in portraits, and drawing fabric from a portrait of the pupil's choice.

Making Colour

Find out how oil paint was made from minerals and other strange substances such as ground up Egyptian mummies and beetles' blood, through a range of activities including close observational artwork.

- Follow-up webquest: KS2 Art 'Tudor Artist's Apprentice'

These **Science** gallery sessions run for 90 minutes and cater for a maximum of 30 students. The Workshop session also caters for a maximum of 30 students.



Dorothy Mary Crowfoot Hodgkin – Science

The Nobel Prize winner Dorothy Hodgkin researched the structure of Vitamin B12 and insulin. Her multiple hands mirror the speed of her thoughts.



MUSIC, DANCE, DRAMA Years 3 to 6

Interpret portraits in new ways through a variety of performing arts approaches, culminating in the opportunity at the end of the session to perform in front of the portrait in the Gallery spaces.

Sing a Portrait

Music Workshops in partnership with English Touring Opera

- **Sept 2010** – Mon 20 / Tues 21 / Weds 22 / Thurs 23 / Fri 24
- **May 2010** – Mon 23 / Tues 24 / Weds 25 / Thurs 26 / Fri 27
- **ALL 10.30 – 14.30**

National Portrait Gallery and English Touring Opera team up to inspire pupils to use portraits as a starting point for developing class compositions. Exploring one portrait in detail and then composing a song about it, pupils will perform their completed compositions in front of the picture that inspired their music.

For more details on Music, including costs, and all bookings please telephone English Touring Opera on 020 7833 2555 or email alexa.hills@englishtouringopera.org.uk

See page 11 for half-day Henry Unton Workshops.

Music, Dance, and Drama workshops run from 10.30 – 14.30 with a break for lunch (not provided). Minimum number of students is 10, maximum is 30.

Karl Friedrich Abel –

Music/ Dance/ Drama

Karl Friedrich Abel was a musician and friend of the painter Thomas Gainsborough. Here he plays the viol, a forerunner of the modern cello.



'We engaged in a whole new experience which we would not have in a classroom.'

SEN schools

SEN Gallery Sessions

We offer a wide range of sessions for SEN Schools and Units exploring pose, character, expression, colour and symbols in portraiture using painting and sculpture. Our cross-curricular workshops complement many facets of the National Curriculum and the QCA's schemes of work including, Literacy, Citizenship, History and Art & Design. These practical art sessions are tailored to suit the specific needs of your students and are taught by our experienced freelancer team. As well as the sessions listed in this section, any of our Primary programmes can be tailored for SEN groups.

See page 28 for CPD Sessions for SEN teachers

- Sessions take place in the gallery spaces front of the portraits and last 90 minutes
- All materials are provided
- Maximum group size is 12 pupils (plus teachers)
- Please ask our bookings team for details of our programmes for community groups and hospital schools



KEY STAGE 1

Telling Tales with Pictures

Find out about key figures in history through these cross-curricular storytelling workshops. Supports National Curriculum links: Literacy – speaking and listening, Citizenship, Drama and encouraging creativity.

Choose from:

- Beatrix Potter
- Florence Nightingale and Mary Seacole (Note: Mary Seacole available from Spring Half term)

KEY STAGE 1 and 2

Discovery Tours

Inspired by portraits in the Gallery's Collection, explore the elements of portraiture through hands-on practical activities.

PHOTOGRAPHY WORKSHOPS

- **Oct 2010**
Wed 20, Thur 21
- **Nov 2010**
Wed 24, Thur 25
- **Mar 2011**
Wed 23
- **Jun 2011**
Tues 14, Wed 15
- **ALL 10.30 – 14.30**
with a break for lunch (not provided)

Work with our experienced photographer to produce photographs using the Collection and temporary exhibitions. Each participant comes away with his or her own photograph.

Self-directed Resource Boxes

Boxes can be used by self-directed groups and mainstream classes with individual SEN pupils.

Explore the Tudor, Victorian or Contemporary galleries using our SEN resource boxes, designed and piloted with teachers working with SEN pupils. Each box includes teachers' questions, worksheets and follow up activities and MAKATON symbols to enable groups to investigate portraiture in further depth.

SEN Videoconferencing

These interactive sessions enable your class to explore the Gallery's unique Collection. To fully participate in the SEN videoconferencing sessions we will contact you about the materials you will need when you book your session.



Beatrix Potter (Mrs Heelis), (1866–1943), (detail) Delmar Banner, 1938, NPC 3635

'A real treat to come to a day so full of interesting, useful ideas.'

CPD for Teachers

Our range of free professional development programmes introduce the Gallery as an educational resource, supporting trainee and experienced Primary teachers to interpret portraiture and develop programming ideas for classroom work and Gallery visits. From practical workshops to exclusive after-hours private views, CPD gives teachers a special insight into the ideas and processes behind our Collections and temporary exhibitions.



Dame (Alice) Ellen Terry, (detail) George Frederic Watts, c. 1864–1865, NPG 2274

'The teachers have not been able to stop talking about each detail of the day. They had a fabulous learning experience. We will be hammering on your door to allow us back.'

SEN TEACHERS

Tasty Tasters

- Twilight: **Thurs 24 Mar 2011**
- 17.30–19.30

Lots of ideas for using portraits in the classroom are up for grabs in this free twilight CPD. Come and join us for a glass of wine and a chance to sample small tasters of KS 1 and 2 sessions. These include a focus on the recently-acquired portrait of Mary Seacole, as well as old favourites such as the Tudors.

SEN Photography CPD

- Twilight: **Thurs 10 Feb 2011**
- 18.00–20.30

Led by an experienced photographer and Gallery educator, this course aims to assist teachers to develop their pupils' visual literacy skills using the Gallery's unique photographic collection and temporary exhibitions dating from the 1840s to the present day. Particularly suitable for Key Stage 2 teachers who teach pupils with special educational needs, the session includes a practical photography session and an introductory tour of the IT Gallery. Complements elements of the National Curriculum and QCA's schemes of work in Art and Design History, Literacy and Science.



'A wonderful opportunity to receive personalised education without having to make a long and expensive journey.'

Videoconferencing

Videoconferencing brings portraiture into your school. Lively discussions between your pupils and Gallery freelance educators about works from the Collection will spark engagement in stories about history, art and famous people.

Please note: sessions can be booked only through Global Leap, not directly through the National Portrait Gallery.

For the latest videoconferencing schedule please see www.global-leap.org Please see our guidelines for how to have a successful videoconference on page 35.

Videoconferencing CPD

CPD sessions for groups of teachers, learning support staff or whole school staff are available by videoconference on selected Thursdays from 16.00 to 17.00. Contact the Gallery for further details on education@npg.org.uk

SEN Videoconferencing

We also offer videoconferencing for SEN groups – please contact us for more details, or see page 22 for SEN programmes.

Videoconferencing bookings: www.global-leap.org



Mary Seacole – History

Mary Seacole was recently voted the greatest ever black Briton. Known for her medical work in the Crimea, she also ran a hotel for soldiers.



Key Stage 1

For Key Stage 1 only, remember to divide your class in half with each group getting 25 to 30 minutes videoconferencing.

Growing up in the Past

Using three or four key portraits, get to know King Charles II from babyhood through to early childhood with his brother and sisters and his pets.

- Follow-up webquest: KS1 'Children and Families'
- Preparation: the groups can bring photocopies of photographs of themselves as babies

Animals in Portraits

Look at pets and other animals in paintings from the past.

- Possible follow-up webquest: KS1 Art 'Model Animals'
- Preparation: pupils are encouraged to bring drawings of their own pets or favourite animals to discuss in this session.

Famous People

This lively storytelling session combines looking at one or more portraits with a story about the fascinating life of a famous person.

Choose one topic from:

- Guy Fawkes and the Gunpowder Plot
- Samuel Pepys and the Fire of London
- King Charles II's escape by hiding in the oak tree
- Lord Nelson
- Florence Nightingale and nursing at Scutari
- Mary Seacole
- Beatrix Potter and Peter Rabbit

Suggestions:

- Follow-up webquest: KS1 History 'Florence Nightingale'
- Follow-up website: The Great Fire of London, created by the National Portrait Gallery, the Museum of London, the London Fire Brigade and two major archives www.fireoflondon.org.uk



FAR LEFT: **Florence Nightingale receiving the Wounded at Scutari**, (detail) Jerry Barrett, 1857, NPG 6202

LEFT: **Christopher Anstey with his daughter**, William Hoare, c.1776–1778, NPG 3084

History at Key Stage 2

Toys in Portraits

Discover how toys have changed from the past to the present through looking at paintings and photographs of children with their toys.

- Follow-up webquest: KS1 History 'Toys from the Past'
- Preparation: pupils are encouraged to bring in drawings of their favourite toys

Victorian Seaside

What were seaside holidays like more than a hundred years ago? What did people enjoy doing there, what did they wear and how did they get there?

Victorian Christmas

When did the Christmas celebrations that we enjoy today first become popular? Who were the people who helped shape our present Christmas Day fun?

Sir Henry Unton:

The Life of an Elizabethan Gentleman

Find out what one painting tells us about the life story of an ambassador of Queen Elizabeth I. Explore the many details scenes of this fascinating portrait.

- Follow-up webquest: KS2 History 'Tudor Film Set'

Tudors

Learn about famous monarchs through investigating three paintings. This session can be tailored to emphasise the early Tudors or the Elizabethans on request.

- Follow-up webquests: KS2 History 'Henry VIII's next wife?' and 'Painting Elizabeth I'

Tudor Seafarers

Explore the lives of some famous seafarers, including Sir Francis Drake, through their portraits and learn about life aboard a Tudor ship.

LITERACY at Key Stage 2

Victorians

Investigate the lives of famous people from Victorian Britain. We welcome your suggestions for portraits to focus on at the booking stage.

- Follow-up webquest: KS2 History 'Victorian Magic Lantern'

ART at Key Stage 2

Getting the Message

How do portraits by Reynolds, Gainsborough and their contemporaries convey messages about the sitter?

- Follow-up webquest: KS2 Art 'Portrait Prize'

Styles of Contemporary Painting

Express opinions about different styles used in twentieth – and twenty-first-century portraits.

- Follow-up webquest: KS2 Art 'Painting in Style'

Older Literature –

Meet Authors from the Past

Get to know authors from the past through looking at their portraits and discussing an extract of their writing.

Select **one** author from this list:

- Richmal Crompton
- Charles Dickens
- Kenneth Grahame
- Frances Hodgson Burnett
- Rudyard Kipling
- A.A. Milne
- E Nesbit
- Dodie Smith
- R.L. Stevenson
- Contemporary comparison: J.K. Rowling

Preparation: Please bring a short presentation to share with us about **any** favourite author, with an extract to read aloud and, if possible, a picture of them.

- Follow-up webquest: KS2 English 'Just So Stories'



John Tunnard, (1910–1971)
John Tunnard, 1959, NPG 6188

VIDEOCONFERENCING WITH US

Please read our tips for a successful videoconferencing session.

Bookings

Please book your session through Global Leap on www.global-leap.org

Once you have booked through this website, the National Portrait Gallery will send you a confirmation letter and complete videoconferencing guidelines.

Session content

For full details see under Videoconferencing on www.npg.org.uk/learning/schools/primary-schools.

Be prepared

Please read the guidelines sent out with your confirmation letter for how to split your class into groups, what to prepare beforehand, and information on the setup of your room.

Guidelines can also be downloaded from our website www.npg.org.uk/learning.

On the day

- Set up your room according to our guidelines and brief your students
- Make a test call 15 minutes before the start time
- Please be ready to start your session on time
- Further information will be supplied when you make your booking, or call us in advance

Cancellations

Videoconferencing sessions are free, but cancellations of booked sessions will be charged.

Useful information

- Bookings: www.global-leap.org
- ISDN Number: 020 7839 7323 (128Kbs)
- Broadband IP address: 80.68.53.122
- Telephone number in videoconferencing area: 020 7925 2175
- Telephone number before videoconferencing sessions: 020 7312 2483

The **Key Stage 2 videoconferencing** sessions run for either 45 minutes or 1 hour. The sessions cater for a minimum of 15 students or a maximum of 30.

The **Key Stage 2 videoconferencing** sessions run for either 45 minutes or 1 hour. The sessions cater for a minimum of 15 students or a maximum of 30.

Resources

ONLINE RESOURCES FOR TEACHERS

We provide a range of free learning resources from our website including Teachers' Notes linked to temporary exhibitions and recent acquisitions including the portrait of Mary Seacole, interactive activities and webquests to support your teaching needs, help you to prepare before your Gallery visit, and to stimulate ideas for post-visit work. Explore ideas around portraiture including temporary exhibitions, techniques and processes, and major artists and personalities featured in our Collection.

Highlights:

- Downloadable PDF Primary Teachers' Notes on 'Tudors', 'Victorians' and new this year 'Mary Seacole – in Focus'
- Increase SEN pupils' knowledge and skills through access resources 'Exploring Elizabeth I', 'Every Picture tells a story' and 'Picture Descriptions'

For full information see

www.npg.org.uk/learning/digital

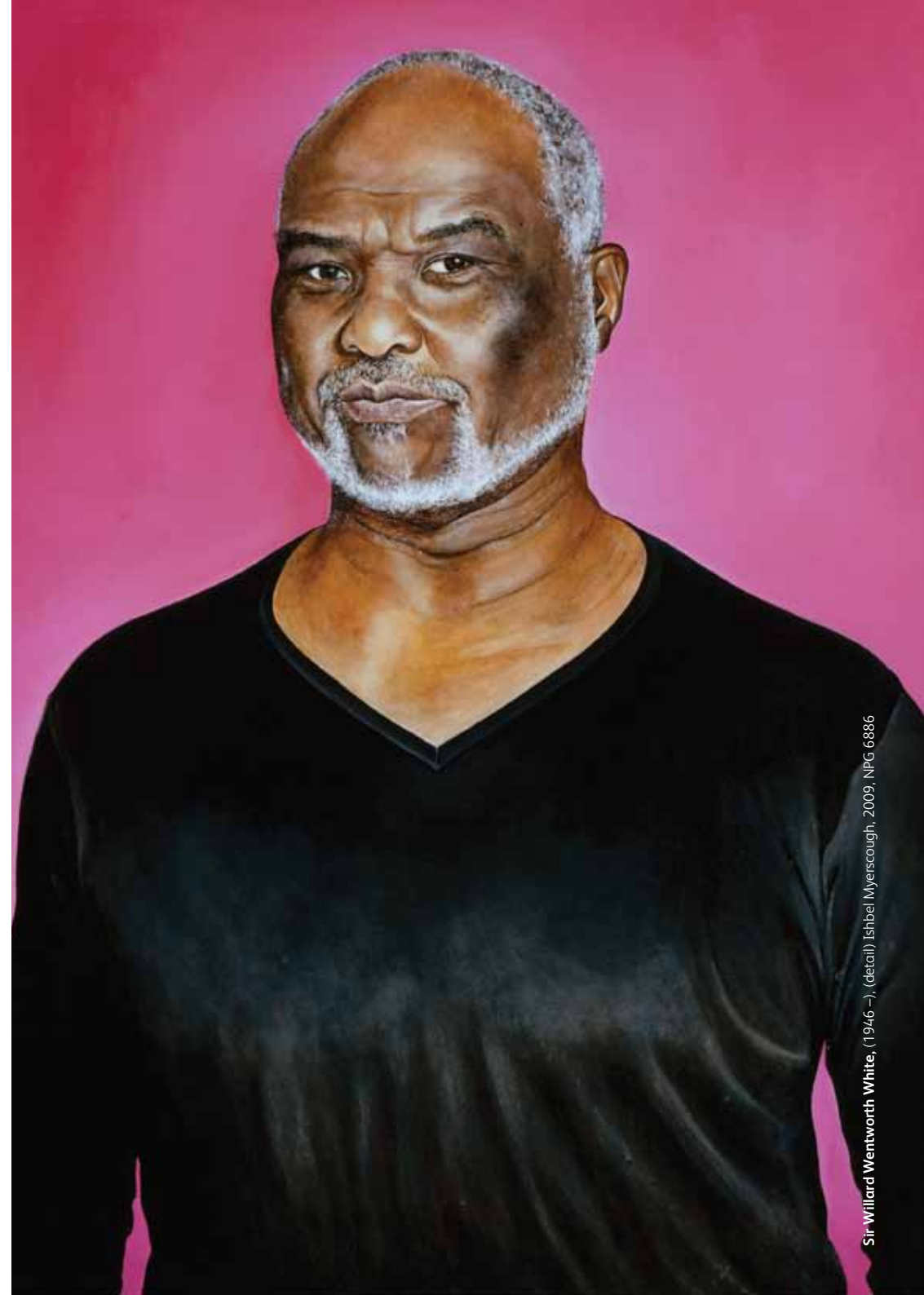
For webquests see

www.npg.org.uk/webquests

PUBLICATIONS

Our extensive range of publications for purchase by schools include illustrated resources, activity packs with posters and art prints, and postcard packs, opening up ways to explore our collections and aspects of history and art practice. Please see our website for further details.

Visit www.npg.org.uk/shop for our full product listings. For more details or to place an order, contact the Mail Order department on 020 7321 6624 or email onlineshop@npg.org.uk



Sir Willard Wentworth White, (1946 -), (detail) Ishbel Myerscough, 2009, NPG 6886

Exhibitions and displays

EXHIBITIONS

Camille Silvy, Photographer of Modern Life, 1834–1910

- **Until 24 Oct 2010**
- Admission £5/
Concessions £4.50 and £4
- Exhibition organised by the Jeu de Paume, Paris, in collaboration with the National Portrait Gallery, London

This exhibition gives a unique glimpse into nineteenth-century society through the eyes of one of early photography's outstanding innovators, Camille Silvy. Over 100 images, including a large number of cartes de visite, focus on a ten-year creative burst from 1857–67 working in Algiers, rural France, Paris and London, and illustrate how Silvy pioneered many now familiar branches of the medium including theatre, fashion and street photography.

Thomas Lawrence: Regency Power and Brilliance

- **21 Oct 2010 – 23 Jan 2011**
- Admission £12/Concessions £10/£9
- Exhibition organised by the National Portrait Gallery, London and Yale Center for British Art, New Haven

Thomas Lawrence was the greatest British portrait painter of his generation and one of the most celebrated artists in Europe in the early decades of the nineteenth century. This exhibition, the first in the UK for over thirty years, presents fifty-four works and provides a fresh understanding of Lawrence's career.

Pre-booked school groups get a special discounted admission rate for visits to charged **exhibitions** on Monday to Wednesday between 10.00 and 13.00.



Elizabeth Farren, Later Countess of Derby, (detail) Thomas Lawrence, 1790, Lent by The Metropolitan Museum of Art, Bequest of Edward S. Harkness, 1940



Dame Barbara Hepworth at work on the armature of a sculpture in the Palais de Danse, (detail) Ida Kar, 1961, NPG x88502

Taylor Wessing Photographic Portrait Prize 2010

- 11 Nov 2010 – 20 Feb 2011
- Admission £2
- Supported by Taylor Wessing

This annual exhibition showcases the most talented emerging photographers, photography students and gifted amateurs alongside that of established professionals.

Hoppé Portraits: Society, Studio and Street

- 17 Feb – 30 May 2011
- Admission £11
- Concessions £10 and £9

E.O. Hoppé was one of the most important and influential photographers of the first half of the twentieth century. With a selection of strikingly modernist portraits, as well as early photojournalist studies, this major exhibition explores Hoppé's rich contribution to the history of portrait photography and captures the reality of day-to-day life in Britain between the wars.

Ida Kar: Bohemian Photographer, 1952–68

- 10 Mar – 19 Jun 2011
- Admission £3
- Concessions £2.50 and £2

Ida Kar worked among avant-garde writers and artists from diverse disciplines and, as a documentary portraitist, her photographs provide an extraordinary insight into cultural life in post-war Britain. This exhibition presents the first re-evaluation in fifty years, of the work of one of the key figures of twentieth-century portraiture.



FAR LEFT: **East End Type 'Buffalo Bill'**, (detail) E.O. Hoppé from Bengal, London, 1933 © 2010 Curatorial Assistance, Inc. / E.O. Hoppé Estate Collection

LEFT: **Making waxworks at Madame Tussauds**, (detail) E.O. Hoppé, London, c.1935 © 2010 Curatorial Assistance, Inc. / E.O. Hoppé Estate Collection

DISPLAYS

Displays are smaller showcases of portraits in the Gallery, ideal for introducing your class to an artist, theme or genre.

Displays in 2010 and 2011 include:

- *Science, Religion and Politics: The Royal Society* until 5 Dec 2010
- *British Artists in Rome: The John Partridge Sketchbook, 1823–27* until 13 Mar 2011
- *Isabella Blow by Noble and Webster* 18 Sep 2010 – 13 Mar 2011

Coming up in 2011:

- *Only Connect* 16 Apr – 27 Nov 2011

Glamour of the Gods: Hollywood Photographs from the Archive of John Kobal

- 7 Jul – 23 Oct 2011
- Admission charge

The exhibition will feature the work of more than fifty photographers, revealing the importance of photography in manufacturing the myth of Hollywood as a magical place, inhabited by glamorous stars. Iconic actors such as Greta Garbo, Marlene Dietrich and Gary Cooper are among the famous faces featured.

Visits and bookings

CHECKLIST

For bookings and information contact the Learning Bookings Line on 020 7312 2483 or education@npg.org.uk

Please note:



We are not able to take provisional bookings



Please note that all bookings need to be discussed and confirmed over the phone

When you contact us have this information at hand:



Date and time of your visit, with alternatives if we can't accommodate your first choice



Type of visit – self-directed or taught session?



Programme and session focus



Age and learning needs of your group, and any useful information about their current areas of study



Numbers of pupils and accompanying adults (please ensure an adult: student ratio of at least 1:10)



School details and contact information including full postal address, telephone and fax numbers



OUR TIPS TO ENJOY YOUR VISIT

Book in advance

Please book before you visit with us.

Get in touch as early as possible to ensure we can accommodate your class. Booking a term in advance is strongly recommended. Bookings are confirmed by phone.

Number of visits

Due to the popularity of our programmes and our limited space, we can provide each school with three taught sessions for different classes each term. We can provide teachers' notes to help you run up to three further sessions yourselves.

Taught sessions

Join our specialist freelance team for educator-led sessions in the Gallery spaces or hands-on workshops. Book from our suggested sessions or work with us to tailor a session.

Self-directed visits

To run your own session, please contact us to book the relevant rooms.

Bookings in advance are essential for self-directed visits.

Admission charges

Admission to the Gallery is free. All taught sessions are free, unless otherwise noted. Some temporary exhibitions have an admission cost, please ask when you book for our special discount rates for pre-booked classes.

In the Galleries

Guidelines are sent when you book, please read and discuss with your group.

Group leaders are responsible for the behaviour of their classes during the visit.

Facilities

Please note we have no parking or lunchroom facilities.

Cancellations

Although our programmes are free, we book our specialist freelancer team and purchase materials in advance. To cover our costs, once the session is confirmed, we reserve the right to apply a cancellation fee if sessions are cancelled or a group fails to attend.

Bookings and enquiries
020 7312 2483 or
education@npg.org.uk

National Portrait Gallery
St Martin's Place,
London WC2H 0HE

Opening hours

Open daily 10.00 –18.00
Closure commences at 17.50
Thursdays and Fridays until 21.00
Closure commences at 20.50
Entry to the Gallery is free,
an entry fee is charged for
some exhibitions.

Access Information



Shop and Bookshop entrance in St Martin's Place and the Orange Street ramp entrance are accessible. Wheelchairs, lifts and special guides are available.



King Edward VI, (1537–1553), (detail),
Unknown artist, after William Scrots,
c.1547 NPG 5511

Queen Elizabeth I, (1533–1603), (detail),
Unknown artist, late 16th – early
17th century (c.1559), NPG 5175

Mary Moser (later Lloyd), (1744–1819)
George Romney, c.1770–1771, NPG 6641

Joanne Kathleen ('J.K.') Rowling,
(1965–), (detail) Stuart Pearson Wright,
2005, NPG 6723

Dorothy Mary Crowfoot Hodgkin,
(1910–1994), (detail), Maggi Hambling,
1985, London, NPG 5797

Karl Friedrich Abel, (1723–1787),
Thomas Gainsborough, c. 1765, NPG 5947



NATIONAL PORTRAIT GALLERY
Primary Schools' Programme 2010/2011
education@npg.org.uk
020 7312 2483
www.npg.org.uk/learning

**National
Portrait
Gallery**



The class of 2010/2011