



## CONTENTS

■ Welcome	2
■ Primary Programmes	4
■ History	6
■ Art	12
■ Other Curriculum Areas	16
■ Videoconferencing	22
■ SEN Schools	30
■ Resources	33
■ Teachers	34
■ Exhibitions	38
■ Visits and Bookings	42
■ How To Find Us	44

## Take another look at learning through portraits

Welcome to the National Portrait Gallery's 2009 / 2010 programmes for primary schools.

The National Portrait Gallery places learning at its heart. Our aim is to use the medium of portraiture to increase pupils' and teachers' understanding of the men and women who have and who are contributing to the culture, identity and rich diversity of Britain.

Taking inspiration from our extensive Collection of portraits from 1500 to the present day, combined with innovative temporary exhibitions and displays, we are a national destination for learning through portraiture. The Gallery offers a unique insight into how society in Britain has developed, opening up different perspectives into portraiture, and generating ideas of achievement and inspiration for all learners.

This booklet outlines our dynamic free programme of curriculum-linked learning experiences for pupils and teachers.

Bring your school face to face with history and contemporary culture at the National Portrait Gallery this year.

### Liz Smith

HEAD OF LEARNING  
National Portrait Gallery



**Queen Victoria** (1819-1901)  
(detail) Bertha Müller, after  
Heinrich von Angeli, 1900 (1899)  
NPG 1252



## Over 500 years of history, art, biography and fame

The Gallery was founded in 1856 to collect portraits of famous British people. On display you will find over 1,000 portraits featuring men and women who have shaped British history from the Middle Ages to the present day, spanning over 500 years of history, art, biography and fame. Our collections feature over 120,000 portraits, from kings and queens, politicians and rulers, writers and artists to scientists and engineers, sportspeople and business leaders, making the Gallery a valuable learning resource for your school. The Gallery's innovative changing programme of exhibitions and displays means there is always something new and exciting to see.

For programme bookings and information: 020 7312 2483 or [education@npg.org.uk](mailto:education@npg.org.uk)

## PRIMARY PROGRAMMES

### Free sessions facilitated by specialist teachers and artists

The National Portrait Gallery works with primary schools in exciting and innovative ways, responding to the individual interests of classes through free ready-made and tailor-made sessions. Responding to the permanent Collection and temporary exhibitions, our specifically-designed range of education programmes, activities and resources link to curriculum requirements for History, Art, Literacy, and Music, Dance and Drama.

Taught gallery sessions and workshops for Reception to Key Stage 2 are led by our specialist freelance team of artists and teachers. We also provide free resources such as online learning resources and publications to support self-directed visits and classroom teaching. Videoconferencing sessions bring the Collection into your school. Popular CPD sessions and private views introduce temporary exhibitions and practical art-making techniques for teachers, positioning the Gallery as a learning resource. See page 42 for how to book your visit.

- Programmes are free of charge and all materials are provided.
- Sessions last from 1½ hours to a half-day
- Sessions can be booked whenever the necessary rooms and staff are available
- We recommend a pre-visit to see the galleries you will be using

## NEW THIS YEAR

### Webquests

Webquests are innovative problem-solving activities for primary pupils, using nine national museum collections to foster enquiry-based learning in a wide number of curriculum areas. We have suggested webquests under session information for valuable follow-up work. To access these and all other webquests, please go to [www.npg.org.uk/webquests](http://www.npg.org.uk/webquests)

# Take another look at the class of 2009/2010

National  
Portrait  
Gallery



**Mary Seacole**  
History



**Beatrix Potter**  
KS1



**Angelica Kauffman**  
Art



**Charles Dickens**  
Literacy



**Stephen Hawking**  
Science



**Jelly D'Aranyi**  
Music / Drama / Dance

'The knowledge and expertise giving the stories behind the paintings was fantastic, really brings it to life'.

# History

## Exciting sessions bring portraits to life

From discussions and story-telling to active participation in role play, our Primary History sessions bring portraits to life in imaginative ways. History sessions range from trying on pieces of costume, or drama, dance and role play, to observation leading to practical artwork. To make what could be the first experience of a gallery for our younger visitors interesting and enjoyable, we introduce the purpose of museums and the need to treasure the past. Discussing how portraits tell us about the past is a focus of all sessions.

For programme bookings and information: 020 7312 2483 or [education@npg.org.uk](mailto:education@npg.org.uk)



### Mary Seacole - History

Mary Seacole was recently voted the greatest ever black Briton. Known for her medical work in the Crimea, she also ran a hotel for soldiers.

Mary Jane Seacole (née Grant) (1805-1881) Albert Charles Challen, 1869, NPG 6856  
Purchased with help from the National Lottery through the Heritage Lottery Fund.



**Samuel Pepys** (1633-1703),  
John Hayls, 1666, NPG 211

## Key Stage 1: Reception to Year 2

### Children and Families

How do the lives of children in the past differ from today? Look at family portraits from the seventeenth century and select one child from a portrait to draw. For Nursery, Reception and Year 1, we focus on one picture and include dressing-up and posing activities.

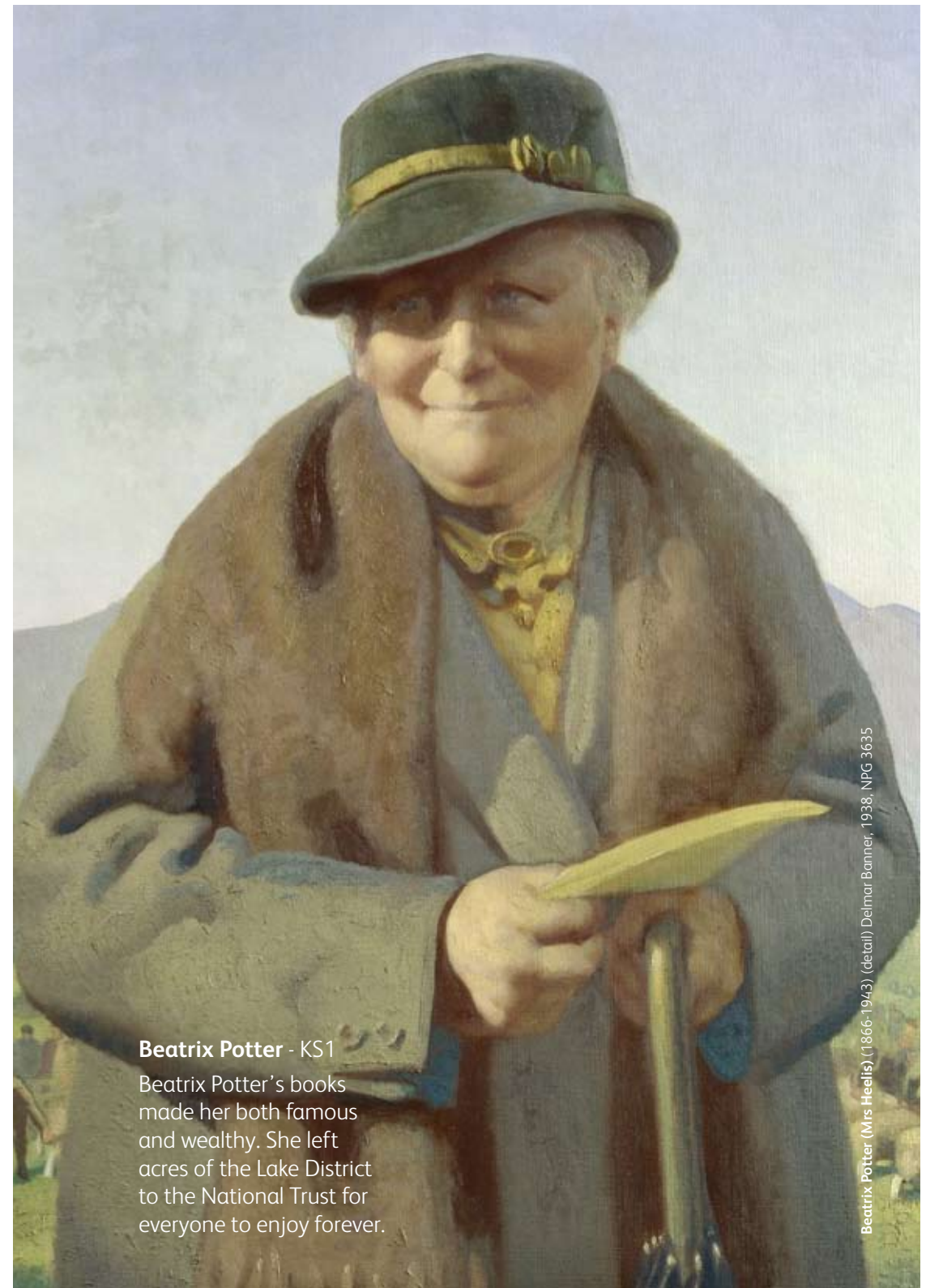
- Follow-up webquest: KS1 History 'Children and Families'

### Famous People

Listen to stories about the lives of two famous men and women in the past and look at how portraits depict the story. Featuring stories about personalities including Guy Fawkes and the Gunpowder Plot, Samuel Pepys and the Great Fire of London, Florence Nightingale, Mary Seacole and Beatrix Potter.

- Follow-up webquest: KS1 History 'Florence Nightingale'
- Follow-up online learning: [www.fireoflondon.org.uk](http://www.fireoflondon.org.uk) is an interactive website on the Great Fire of London, using museum artefacts and original documents, created by the National Portrait Gallery, the Museum of London, the London Fire Brigade and two major archives.

All **History** gallery sessions run for 90 minutes and cater for a maximum of 30 pupils.



### Beatrix Potter - KS1

Beatrix Potter's books made her both famous and wealthy. She left acres of the Lake District to the National Trust for everyone to enjoy forever.

Beatrix Potter (Mrs Heelis) (1866-1943) (detail) Delmar Banner, 1938, NPG 3635



**Queen Victoria** (1819-1901) (detail)  
replica by Sir George Hayter, 1863  
(1838), NPG 1250

## Key Stage 2: Years 3 to 6

### TUDOR TIMES

#### The Tudors

Using observation, discussion and drawing inspired by three to four key portraits, focus on monarchs including Henry VIII and Elizabeth I.

- Follow-up webquests: KS2 History 'Henry VIII's next wife?' and 'Painting Elizabeth I'

#### Tudor Costume

Discussion, dressing up and practical artwork exploring how clothes from the Tudor period are portrayed in portraits.

### VICTORIAN BRITAIN

#### The Victorians

Investigate the lives and experiences of a range of famous people from Victorian Britain, including Queen Victoria, Prince Albert, Florence Nightingale or selected Victorian writers.

- Possible follow-up webquest: KS2 History 'The Great Exhibition'

#### Victorian Costume

How are Victorian-era clothes portrayed in portraits? Looking at four or five portraits, pupils engage in discussion, dressing-up and practical art activities.

All History workshops cater for a minimum of 18 students and a maximum of 30 students.



## History Workshops

### Henry Unton Workshop

Elizabethan Social History Interpreted in Tudor Dance for Key Stage 2

- **Nov 2009** - Mon 9 / Tues 10 / Wed 11 / Thurs 12 / Fri 13
- **Nov/Dec 2009** - Mon 30 / Tues 1 / Wed 2 / Thurs 3 / Fri 4
- **Jan 2010** - Mon 18 / Tues 19 / Wed 20 / Thurs 21 / Fri 22
- **ALL 10.30 to 12.30**

Reconstruct the life of the Elizabethan ambassador Sir Henry Unton with this half-day session of mime and Tudor dance. Starting with a slide presentation of the portrait, discover fascinating aspects of Elizabethan social history, learn to dance a pavane and then use the music to mime different aspects of Unton's life. The session culminates in a performance of completed work in front of Unton's portrait in the Tudor Gallery.

- Follow-up webquest: KS2 History 'Tudor Film Set'

Contact our Bookings team to discuss available times and dates to suit your curriculum plans.



**Anne of Cleves** (1515-1557) (detail)  
Wenceslaus Hollar, after Hans Holbein the Younger, 1648, NPG D11254

### Henry VIII and

### Anne of Cleves Workshop

Role Play Sessions for Years 5 and 6

- **Nov 2009** - Mon 9 / Tues 10 / Wed 11 / Thurs 12 / Fri 13
- **ALL 13.15 to 14.45**

A fascinating role play drawing on class discussion skills to recreate negotiations for the marriage of Henry VIII and Anne of Cleves. Working in two groups, produce drawings and descriptions of the monarch from portraits, and design questions to ask the other court. The two courts then meet and debate whether the marriage should go ahead or not.

- Follow-up webquest: KS2 History 'Henry VIII's next wife?'
- Based in the Clore Education Studio

'Totally inspired.  
Cherished the time  
to study the pictures  
in detail to find the  
hidden messages.'

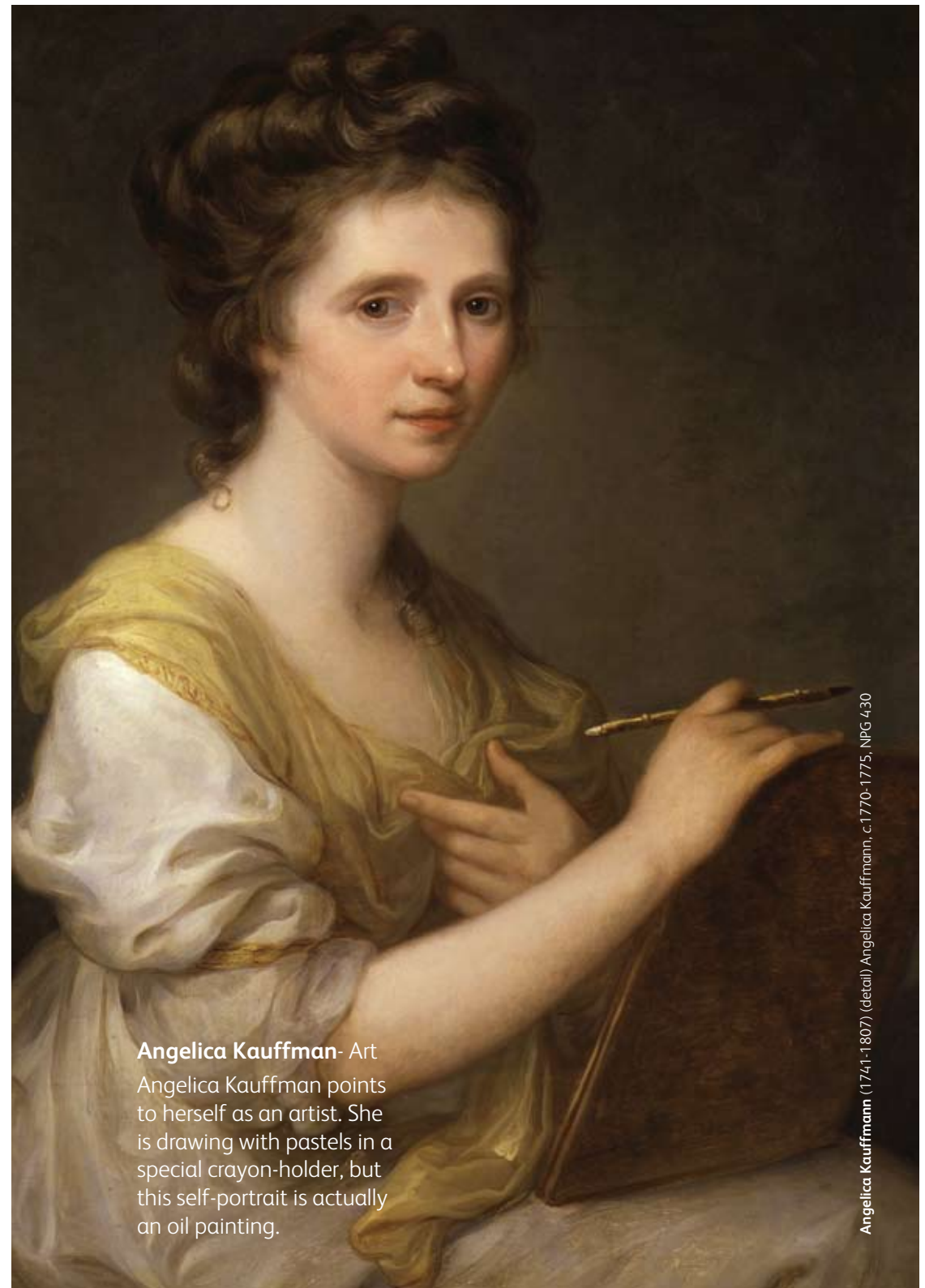
## Art

### Make your own portraits inspired by ours

Enhance skills, knowledge and understanding of art by interacting with portraits through active participation and observation, discussion, role play and hands-on art-making activities. Take a journey through our Collection, directly interacting with portraiture. Our approach is to link our portraits with children's own experiences and interests. Our specialist freelance team direct and facilitate sessions, encouraging pupils to experiment with new media and techniques and to come face to face with different ideas about what portraits can be.

From 'ready made' art sessions and hands-on workshops, we can also specifically tailor a session relating to the permanent collection to meet your requirements around a theme or room of your choice. To maximise their experience, we recommend that teachers integrate their visit into a sequence of portraiture-based work in school, including pre- and post-visit activities such as drawing self-portraits or working from a live model to gain confidence translating ideas to a two-dimensional surface.

For programme bookings and information: 020 7312 2483 or [education@npg.org.uk](mailto:education@npg.org.uk)



#### Angelica Kauffman- Art

Angelica Kauffman points to herself as an artist. She is drawing with pastels in a special crayon-holder, but this self-portrait is actually an oil painting.

Angelica Kauffmann (1741-1807) (detail) Angelica Kauffmann, c.1770-1775, NPG 430



**Self-portrait** (detail), Maggi Hambling, 1977-8, NPG 6562

## KEY STAGE 1:

Reception to Year 2

### Children and Families

How are other children depicted in portraits – what did they wear, how were they posed, what were they thinking? Discuss one picture and make drawings in response with fabric crayons. Back at school, pupils' drawings are ironed onto fabric provided by the Gallery. For Nursery, Reception and Year 1 children we focus on one picture and include dressing up and posing activities.

- 1 hour to 90 minutes
- Follow-up webquest: KS1 Art 'Children and Families'

## KEY STAGE 2: Years 3 to 6

### Getting the Message

How do portraits by Reynolds, Gainsborough and their contemporaries convey messages about the sitter through clothing, pose, composition and objects? Pupils discover and discuss messages then select one work to draw using pastels.

- Follow-up webquest: KS2 Art 'Portrait Prize'

### Styles of Contemporary Painting

Become aware of the wide range of different methods and techniques used by contemporary artists by working in the style of a selected contemporary portrait. Pupils gain the confidence to express opinions about different styles of portrait painting.

- Follow-up webquest: KS2 Art 'Painting in Style'

All Art gallery sessions run for 90 minutes (excluding 'Children and Families').  
All Art gallery sessions cater for a maximum of 30 students.



**Queen Elizabeth I** (1533-1603) (detail)  
Unknown artist, c.1575, NPG 2082

## KEY STAGE 2: Years 3 to 6

### The Faces of Elizabeth I

Following a discussion about the Elizabethan idea of beauty, draw Queen Elizabeth I using the Tudor method of copying portraits called 'pouncing', and complete a portrait in colour.

- Recommended for Years 5 and 6
- Follow-up webquest: KS2 Art 'Painting Elizabeth I'

All Art gallery sessions run for 90 minutes (excluding 'Children and Families').  
All Art gallery sessions cater for a maximum of 30 students.



## NEW THIS YEAR: Art Workshops

### Indian Miniature Painting Workshop

- **Mar 2010** - Tues 23 / Weds 24 / Fri 26
- **May 2010** - Tues 18 / Weds 19 / Thurs 20 / Fri 21
- **ALL 10.30-2.30**

Artist and experienced miniaturist Anita Chowdry leads a workshop inspired by the exhibition, *The Indian Portrait 1560-1860*. View and discuss key works in this exhibition, learn how to make paint from minerals, and experiment with various brush and watercolour techniques to colour your own miniatures. Pupils increase their knowledge about Mughal culture and try on Indian costumes.

- One class, maximum 30 pupils
- Follow-up webquest looking at Tudor miniatures: KS2 Art 'Tudor Artist's Apprentice'

'Lots of 'wow' factor in terms of seeing real portraits.'

## Other curriculum areas

### LITERACY Years 3 to 6

Engaging sessions combine Literacy with Art and History, providing opportunities to meet portraits of classic authors from the past, explore the biographies of some famous and intriguing people and increase written skills through hands-on activities.

#### Past Lives:

##### Biography Sessions

Explore the biographies of sitters from one of the following periods: Elizabethan, Stuart (including the diaries of Samuel Pepys), Eighteenth Century, Regency or Victorian. After hearing about sitters' lives, draw directly from the portrait and plan a short biography of their selected person to be written up back in school.

- Supports the Revised Literacy Framework, Year 6 Non-fiction – Unit 1: Biography and Autobiography

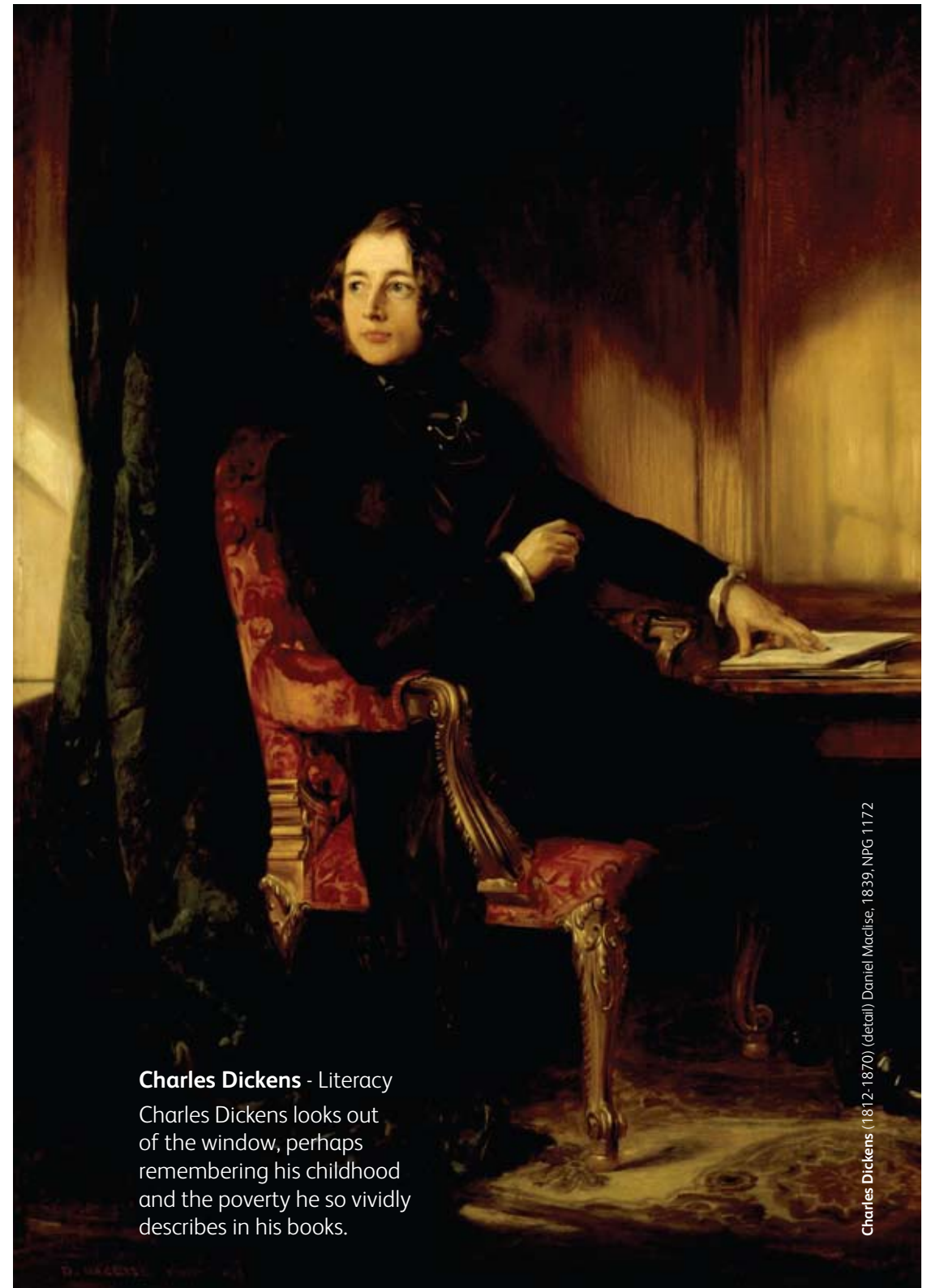
#### Authors from the Past

##### Older Literature

A dynamic session where pupils can examine portraits, hear book extracts and discuss the writing techniques of famous authors such as Charles Dickens, Rudyard Kipling, Robert Louis Stevenson, Beatrix Potter and, when available, J.K. Rowling for a modern comparison. Drawing directly from an author's portrait, pupils discuss their response to these works today.

- Supports the Revised Literacy Framework, Year 5 Narrative – Unit 4: Older Literature
- Follow-up webquest: KS 2 English 'Just So Stories'

These **Literacy** gallery sessions run for 90 minutes and cater for a maximum of 30 students.



#### Charles Dickens - Literacy

Charles Dickens looks out of the window, perhaps remembering his childhood and the poverty he so vividly describes in his books.

Charles Dickens (1812-1870) (detail) Daniel Maclise, 1839, NPG 1172



**Louise de Kéroualle, Duchess of Portsmouth** (1649-1734) (detail)  
Pierre Mignard, 1682, NPG 497

## SCIENCE Years 3 to 6

An opportunity for budding scientists to link Science with aspects of portraiture and Art. Investigate different properties of materials and discover how items we take for granted today were made in pre-industrial Britain.

### Fabric of Life

Explore how natural fabrics such as wool, silk and linen were represented in portraiture, through handling sessions with fabric samples, comparisons between different textures in portraits, and drawings of fabrics from a portrait of the pupil's choice.

### Making Colour

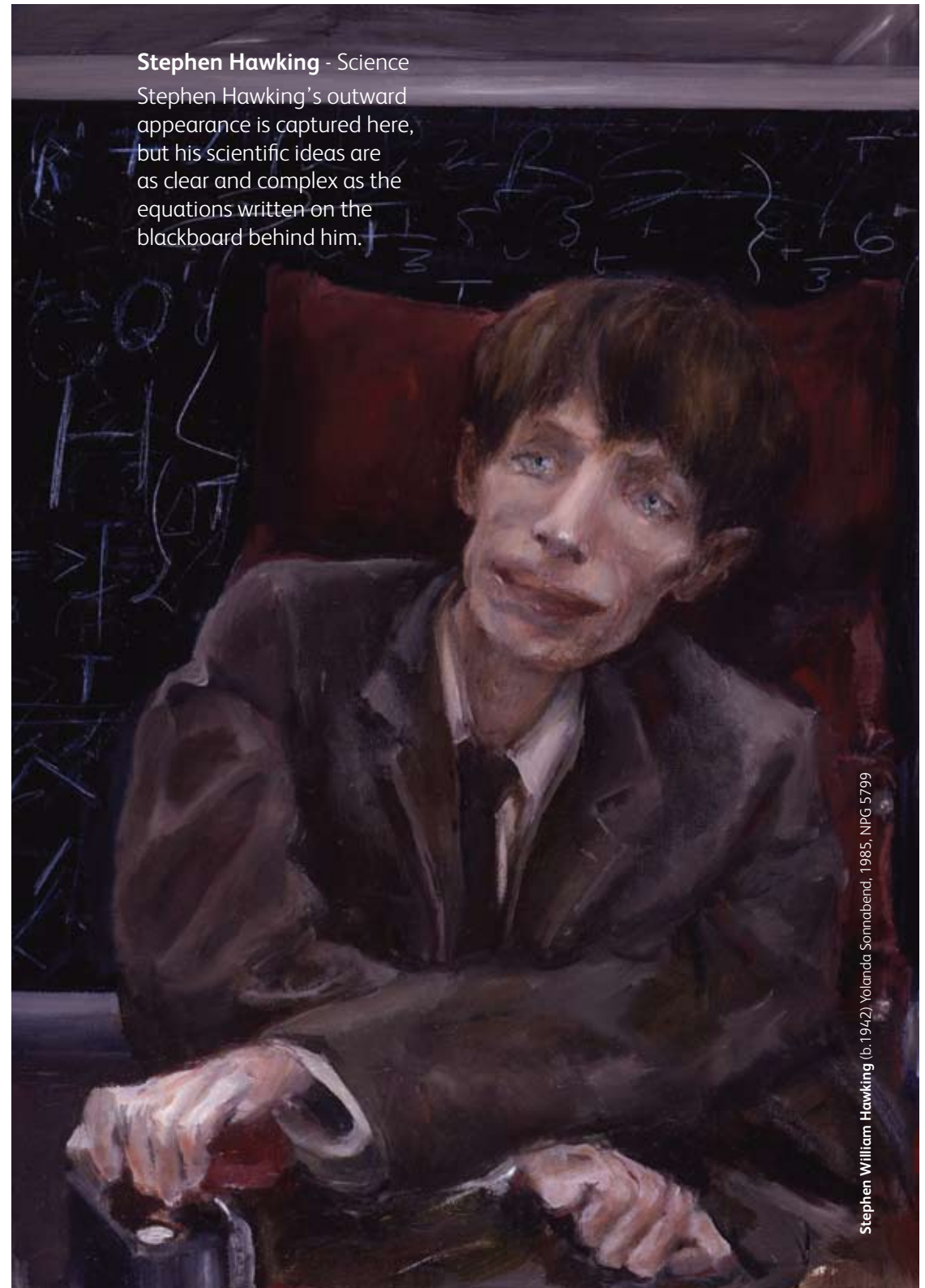
Find out how oil paint was made from minerals and other strange substances such as ground up Egyptian mummies and beetles' blood, through a range of activities including matching shades of colour and close observational artwork.

- Follow-up webquest: KS2 Art 'Tudor Artist's Apprentice'

These **Science** gallery sessions run for 90 minutes and cater for a maximum of 30 students. The **Workshop** session also caters for a maximum of 30 students.

### Stephen Hawking - Science

Stephen Hawking's outward appearance is captured here, but his scientific ideas are as clear and complex as the equations written on the blackboard behind him.



Stephen William Hawking (b.1942) Yolanda Sonnabend, 1985, NPG 5799



## MUSIC, DANCE, DRAMA Years 3 – 6

Interpret portraits in new ways through using a variety of performing arts approaches. At the end of these sessions, pupils get the opportunity to perform in the Gallery spaces in front of the portrait that inspired their work.

### Sing a Portrait

Music Workshops in partnership with English Touring Opera

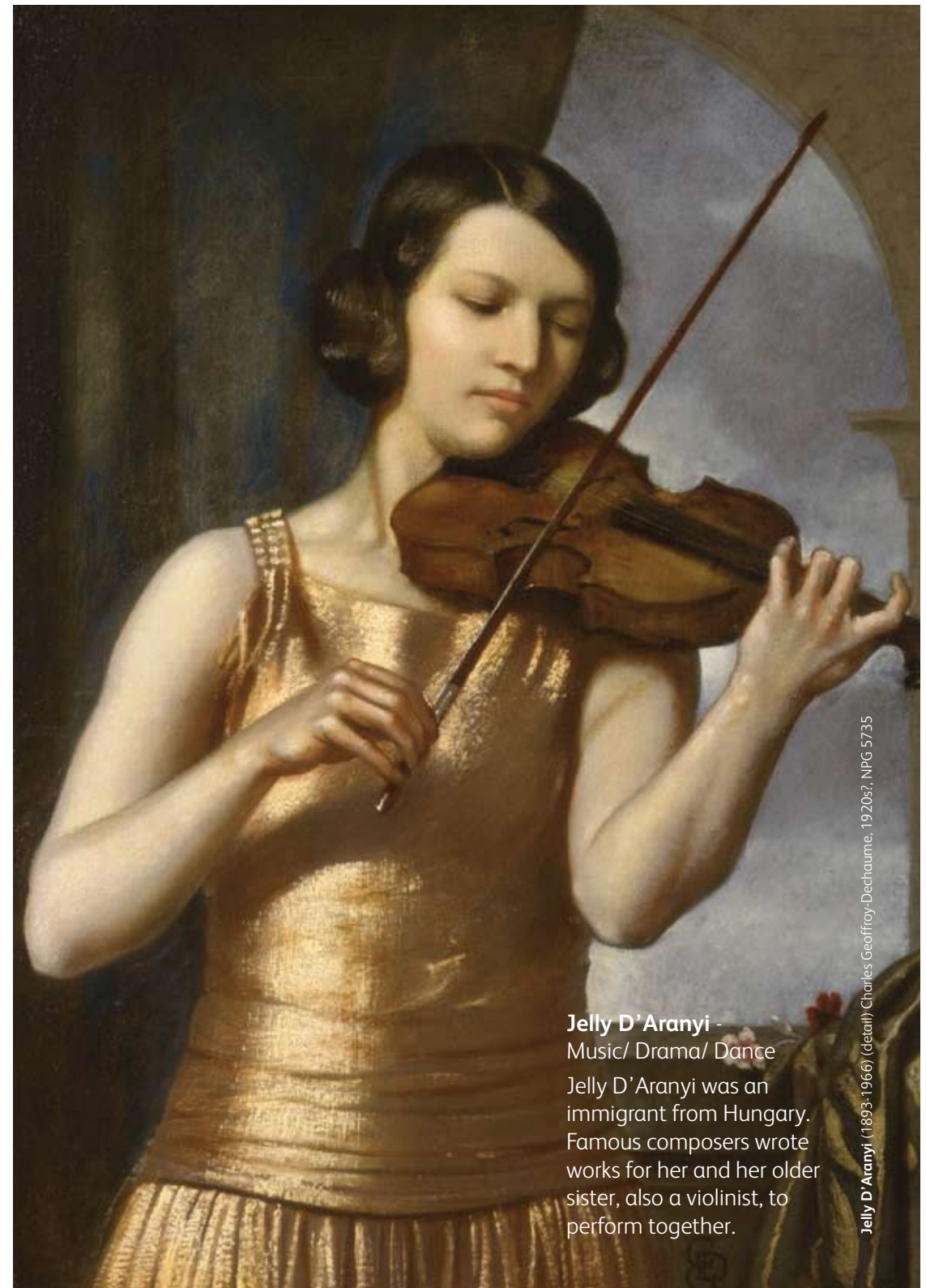
- **Sept /Oct 2009** - Mon 28 / Tues 29 / Weds 30 / Thurs 1 / Fri 2
- **May 2010** - Mon 24 / Tues 25 / Weds 26 / Thurs 27 / Fri 28
- **ALL 10.30 -14.30**

National Portrait Gallery and English Touring Opera team up to inspire pupils to use portraits as a starting point for developing class compositions. Exploring one portrait in detail and then composing a song about it, pupils will perform their completed compositions in front of the picture that inspired their music.

For more details on Music and all bookings please telephone English Touring Opera on 020 7833 2555 or email alexa.hills@englishtouringopera.org.uk

See page 11 for Henry Unton Workshop and Henry VIII and Anne of Cleves Workshop.

**Music, Dance, and Drama** workshops run from 10.30 – 14.30 with a break for lunch (not provided). Minimum number of students is 10, maximum is 30.



**Jelly D'Aranyi** -  
Music/ Drama/ Dance  
Jelly D'Aranyi was an immigrant from Hungary. Famous composers wrote works for her and her older sister, also a violinist, to perform together.

Jelly D'Aranyi (1893-1966) (detail) Charles Geoffrey-Dechaume, 1920s?, NPG 5735

'A wonderful opportunity to receive personalised education without having to make a long and expensive journey.'

# Videoconferencing

## Videoconferencing

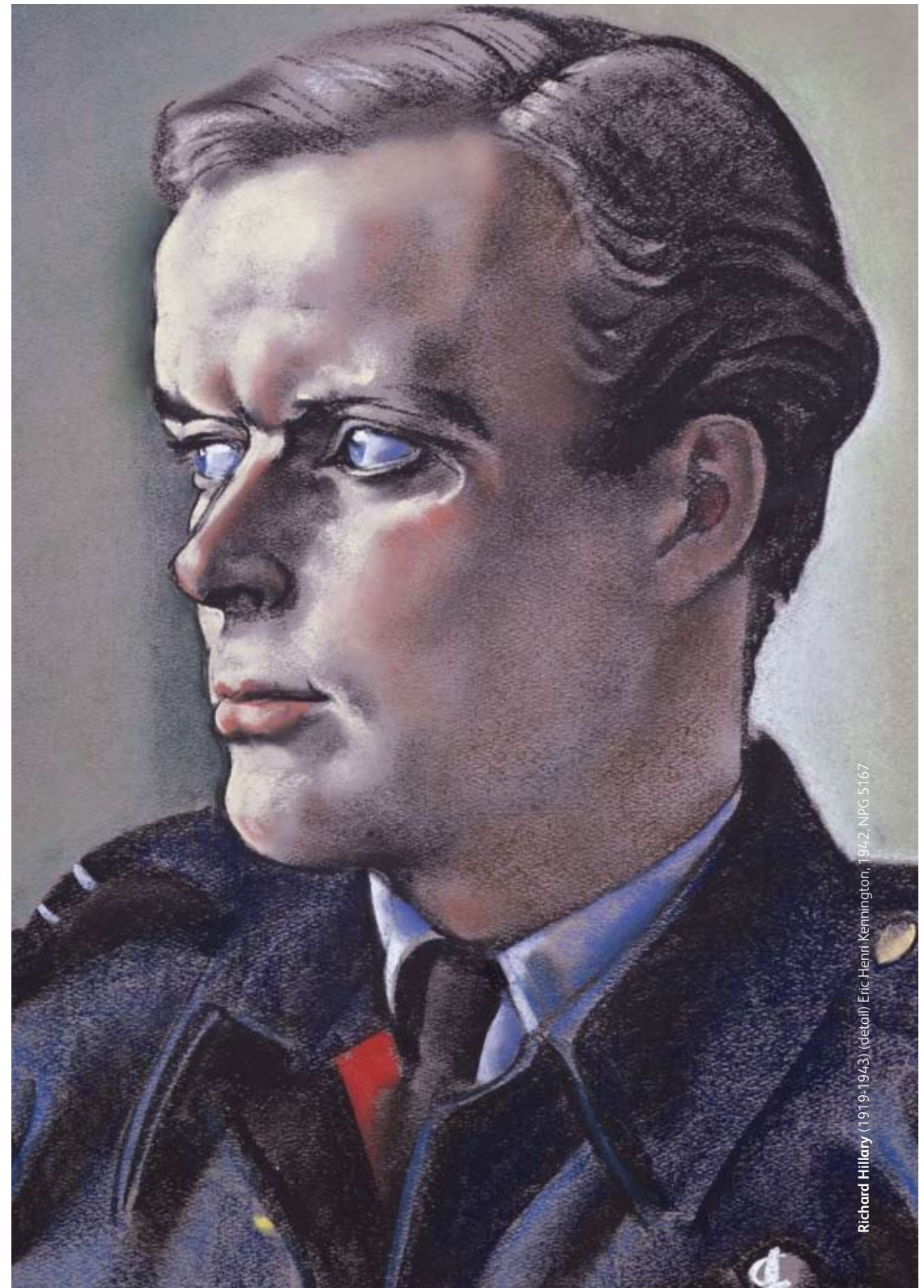
Videoconferencing brings the National Portrait Gallery into your school. Experience working with our portraits and our specialist freelancer team in your classroom through lively discussions between your pupils and our Gallery educators, engaging in ideas around history, art and famous people through portraiture.

Please note that sessions can be booked only through Global Leap, not directly by the National Portrait Gallery. See [www.global-leap.org](http://www.global-leap.org) for the current videoconferencing schedule. Please state on your booking form which topic you require of those on offer for any particular day. Please also see our guidelines for having a successful videoconference with us on page 28.

## Videoconferencing CPD

Contact us to find out about CPD sessions on videoconferencing. These are available on selected Thursdays from 16.00 to 17.00 for groups of teachers, learning support staff or whole school staff.

Videoconferencing bookings: [www.global-leap.org](http://www.global-leap.org)



Richard Hillary (1919-1943) (detail) Eric Henri Kennington, 1942. NPG 5167



FAR LEFT: **Catherine Maria ('Kitty') Fisher** (died 1767) Nathaniel Hone, 1765, NPG 2354

LEFT: **Christopher Anstey with his daughter**, William Hoare, c.1776-1778, NPG 3084

## Key Stage 1

Your class should ideally be divided in half with each group getting 25 to 30 minutes videoconferencing.

### Growing up in the Past

Using three or four key portraits, get to know King Charles II from babyhood through to early childhood with his brother and sisters and his pets. At age twelve, he is shown in armour ready for his first battle.

- Follow-up webquest: KS1 'Children and Families'
- Preparation: ideally some of the group should bring photocopies of photographs of themselves as babies.

### Animals in Portraits

Look at pets and other animals in paintings from the past. Pupils are encouraged to bring drawings of their own pets or favourite animals to discuss in this session.

- Possible follow-up webquest: KS1 Art 'Model Animals'

### Famous People

This lively storytelling session combines looking at one or more portraits with a story about the fascinating life of a famous person.

#### Choose one topic from:

- Guy Fawkes and the Gunpowder Plot
- Samuel Pepys and the Fire of London

- King Charles II's escape by hiding in the oak tree
- Lord Nelson
- Florence Nightingale and nursing at Scutari
- Mary Seacole
- Beatrix Potter and Peter Rabbit

#### Suggestions:

- Follow-up webquest: KS1 History 'Florence Nightingale'
- Follow-up website: The Great Fire of London, using museum artefacts and original documents, created by the National Portrait Gallery, the Museum of London, the London Fire Brigade and two major archives [www.fireoflondon.org.uk](http://www.fireoflondon.org.uk)

### Toys in Portraits

Discover how toys have changed from the past to the present through looking at paintings and photographs of children with their toys. Pupils are encouraged to bring in drawings of their favourite toys.

- Follow-up webquest: KS1 History 'Toys from the Past'

### Victorian Seaside

What were seaside holidays like more than a hundred years ago? What did people enjoy doing there, what did they wear, how did they get there and what was different from today?

### Victorian Christmas

When did Christmas celebrations that we enjoy today, such as the Christmas tree, Christmas cards, Christmas puddings and trips to the pantomime, first become popular? Who were the people who helped shape our present Christmas Day fun?

The **Key Stage 1 videoconferencing** sessions run for either 30 minutes or 1 hour. The sessions cater for a minimum of 15 students or a maximum of 30.

Videoconferencing bookings: [www.global-leap.org](http://www.global-leap.org)

'The children were desperate to find out more about the Victorians. They were engaged and challenged.'

## HISTORY at Key Stage 2

### Sir Henry Unton:

#### The Life of an Elizabethan Gentleman

Find out what a painting tells us about the life story of an ambassador of Queen Elizabeth I. How were babies cared for? What was a Tudor banquet like? What jobs did servants do? How did rich and poor people interact? Discover the answers through exploring the many details scenes of this fascinating portrait.

- Follow-up webquest: KS2 History 'Tudor Film Set'

### Tudors

Learn about famous monarchs, including Henry VIII and Elizabeth I, through investigating three paintings. This session can be tailored to emphasise the early Tudors or the Elizabethans on request.

- Follow-up webquests: KS2 History 'Henry VIII's next wife?' and 'Painting Elizabeth I'

### Victorians

Investigate the lives and experiences of famous people from Victorian Britain, including Queen Victoria, Prince Albert and other famous people, for example, Florence Nightingale or selected Victorian writers. We welcome your suggestions at the booking stage.

- Possible follow-up webquest: KS2 History 'The Great Exhibition'

The **Key Stage 2 videoconferencing** sessions run for either 45 minutes or 1 hour. The sessions cater for a minimum of 15 students or a maximum of 30.



FAR LEFT: **Sir Robert ('Bobby') Charlton**, (b.1937) Peter Edwards, 1991, NPG 6140

LEFT: **Kenneth Grahame** (1859-1932) (detail) Anthony Wysard, 1990, NPG D275 © reserved

## ART at Key Stage 2

### Getting the Message

Examine how a portrait by Reynolds, Gainsborough and their contemporaries can convey messages about the sitter through pose, expression, accessories, composition and background.

- Follow-up webquest: KS2 Art 'Portrait Prize'

### Styles of Contemporary Painting

Learn about three or four different styles used in twentieth- and twenty-first-century portraits, and gaining the confidence to express opinions about the portraits discussed.

- Follow-up webquest: KS2 Art 'Painting in Style'

The **Key Stage 2 videoconferencing** sessions run for either 45 minutes or 1 hour. The sessions cater for a minimum of 15 students or a maximum of 30.

## LITERACY at Key Stage 2

### Older Literature –

#### Meet Authors from the Past

Get to know authors from the past through looking at portraits and reading and discussing an extract of their writing. Select **one** author from this list:

- Richmal Crompton
- Charles Dickens
- Kenneth Grahame
- Frances Hodgson Burnett
- Rudyard Kipling
- A.A. Milne
- E Nesbit
- Dodie Smith
- R.L. Stevenson
- Contemporary comparison: J.K. Rowling

Preparation: Please bring a short presentation to share with us about **any** favourite author, with an extract to read aloud and, if possible, a picture of them.

- Follow-up webquest: KS2 English 'Just So Stories'



**Frances, Countess of Somerset**  
(1590-1632) (detail) Studio of  
William Larkin, c. 1615, NPG 1955

## VIDEOCONFERENCING WITH US

Please read our tips for a successful videoconferencing session.

### Bookings

Please book your session through Global Leap on [www.global-leap.org](http://www.global-leap.org)

Once you have booked via this website, the National Portrait Gallery will send you a confirmation letter and complete videoconferencing guidelines.

### Session content

For full details please look under Videoconferencing on [www.npg.org.uk/learning](http://www.npg.org.uk/learning).

### Be prepared

Please read the guidelines sent out with your confirmation letter for how to split your class into groups, what your class needs to bring beforehand, and information on the setup of your room. Guidelines can also be downloaded from our website [www.npg.org.uk/learning](http://www.npg.org.uk/learning).

### On the day

- Set up your room according to our guidelines and brief your students.
- Make a test call 15 minutes before the start time.
- Please be ready to start your session on time.
- Further information will be supplied when you make your booking, or call us in advance.

### Cancellations

Videoconferencing sessions are free, but cancellations of booked sessions will be charged.

### Useful information

- Bookings: [www.global-leap.org](http://www.global-leap.org)
- ISDN Number: 020 7839 7323 (128Kbs)
- Broadband IP address: 80.68.53.122
- Telephone number in videoconferencing area: 020 7925 2175
- Telephone number before videoconferencing sessions: 020 7312 2483



'We engaged in a whole new experience which we would not have in a classroom.'

## SEN Schools

### SEN Gallery Sessions

We offer a wide range of sessions for SEN Schools and Units. Our cross-curricular workshops complement many facets of the National Curriculum and the QCA's schemes of work including, Literacy, Citizenship, History and Art & Design.

These practical art sessions are tailored to suit the specific needs of your students and are taught by experienced art educators. Sessions explore pose, character, expression, colour and symbols in portraiture using painting and sculpture.

The sessions take place in the gallery spaces front of the portraits, and sessions last 1½ hours. We provide all the materials needed for practical activities in the Gallery. The maximum group size is 12 pupils (plus teachers).

Please ask our bookings team for details of our programmes for community groups, hospital schools and outreach sessions. Information on sessions is available in the Access, Community and Outreach leaflet and on our website.



King Edward VI (1537-1553) (detail) studio of William Scrots, c.1546, NPG 442

For programme bookings and information: 020 7312 2483 or [education@npg.org.uk](mailto:education@npg.org.uk)

## KEY STAGE 1

### Telling Tales with Pictures

These exciting cross-curricular storytelling workshops enable pupils to find out about key figures in history. Supports the following National Curriculum links: Literacy - speaking and listening, Citizenship, Drama and encouraging creativity.

Choose from:

- Beatrix Potter
- Florence Nightingale and Mary Seacole

## KEY STAGE 1 and 2

### Discovery Tours

Inspired by portraits in the Gallery's Collection, explore the elements of portraiture through hands-on practical activities.

### SEN Videoconferencing

Let the National Portrait Gallery come to your school. These interactive sessions enable your class to explore the Gallery's unique Collection. To fully participate in the SEN videoconferencing sessions we will contact you about the materials you will need when you book your session.

## PHOTOGRAPHY WORKSHOPS

- **Jun 2010** - Mon 14 – Fri 18, Mon21 – Wed 23
- **ALL 10.30 – 14.30** with a break for lunch (not provided)

Work with our experienced photographer to produce photographs using the Collection and temporary exhibitions. Each participant comes away with his or her own photograph.

See page 36 for CPD Sessions for SEN teachers

### Self-directed Resource Boxes

Boxes can be used by self-directed groups and mainstream classes with individual SEN pupils

Explore the Tudor, Victorian or Contemporary galleries using our SEN resource boxes. These boxes have been designed and piloted with teachers working with SEN pupils. Each box includes teachers' questions, workshop and follow up activities and MAKATON symbols to enable pupils to investigate portraiture in further depth.

# Resources

## TEACHING RESOURCES

### Digital Resources

To support your group's needs, help you prepare for your visit to the Gallery, and stimulate ideas for post-visit units of work, we provide a wide range of free learning resources on our website including Teachers' Notes, interactive web activities and webquests. Resources explore ideas around portraiture including temporary exhibitions, techniques and processes, key movements and styles, and major artists featured in our Collection.

### Highlights:

- Downloadable PDF Primary Teachers' Notes on 'Tudors' and 'Victorians'
- Activities for KS1 History and KS2 Art and Maths including 'Charles II and the Oak Tree', 'Great Fire of London', 'Families in Art' and 'Lining Up Time.'
- Increase SEN pupils' knowledge and skills through our supporting access resources 'Exploring Elizabeth I', 'Every Picture tells a story' and 'Picture Descriptions'.
- For webquests see [www.npg.org.uk/webquests](http://www.npg.org.uk/webquests)

For the full list of our extensive resources please see [www.npg.org.uk/learning/digital.php](http://www.npg.org.uk/learning/digital.php)

## PUBLICATIONS

Our extensive range of publications for teachers and students, written by education specialists, includes illustrated resources, activity packs with posters and art prints, and postcard packs with up to twelve illustrated cards and a booklet.

### Highlights:

#### The Kings and Queens of England

- David Williamson, National Portrait Gallery, £5 special Gallery price (RRP £9.50) paperback

This accessible and popular guide traces the origins of the kings and queens of England from Alfred the Great to Queen Elizabeth II. An accompanying Royal Lineage Poster is also available for £4.90.

#### Tudor Portraits Resource Pack

- £7.34

The Tudor Portraits Resource Pack (National Curriculum Key Stage 2), covers topics on Art, Maths, English and Geography. The pack contains 6 posters or art prints and a 32-page illustrated booklet prepared by the National Portrait Gallery's Learning Department.

#### A Guide to Contemporary Portraits

- Sarah Howgate and Sandy Nairne, £6.99

The Gallery's Director and Contemporary Curator discuss key works from the collection, including images of David Beckham, Zaha Hadid, J.K. Rowling and Akram Khan, and portraits by leading British artists Tracey Emin, David Hockney, Gilbert and George and Sam Taylor-Wood.

These sessions run for 90 minutes for up to 12 pupils.

Visit [www.npg.org.uk/shop](http://www.npg.org.uk/shop) for our full product listings. For more details or to place an order, contact the Mail Order department on 020 7321 6624 or email [onlineshop@npg.org.uk](mailto:onlineshop@npg.org.uk).

'A real treat to come to a day so full of interesting, useful ideas.'

## Teachers

Our range of free professional development programmes introduce the Gallery as an educational resource, supporting Primary teachers to interpret portraiture and develop programming ideas for classroom work and Gallery visits. From practical workshops to exclusive after-hours private views, CPD gives teachers a special insight into the ideas and processes behind our Collections and temporary exhibitions.



Virginia Woolf (née Stephen) (1882-1941) (detail), George Charles Beresford, 1902, NPG P221

For programme bookings and information: 020 7312 2483 or [education@npg.org.uk](mailto:education@npg.org.uk)



'The teachers have not been able to stop talking about each detail of the day. They had a fabulous learning experience. We will be hammering on your door to allow us back.'

## SEN TEACHERS

### Private View:

#### The Indian Portrait 1560-1860

- **Thurs 18 Mar 2010**
- 17.30 -19.30

Explore *The Indian Portrait* at this free evening event with an introductory talk and free exhibition entry. Meet your colleagues, collect a Teachers' Resource pack and enjoy a glass of wine.

### Indian Miniature CPD Day

- **Thurs 25 Mar 2010**
- 10.00 – 16.00

Led by artist Anita Chowdry, this practical session draws inspiration from the exhibition, *The Indian Portrait 1560–1860*. Following a free exhibition visit, learn how to make paint from minerals, and experiment with drawing with brush and ink and various techniques for colouring miniatures. Also introduces how to paint miniatures with KS2 pupils, inspired both by Indian and Tudor miniature painting.

### Photography CPD

- **Mon 8 Mar 2010**
- 10.30–16.00

Led by an experienced photographer and Gallery educator, this course aims to assist teachers to develop their pupils' visual literacy skills using the Gallery's unique photographic collection and temporary exhibitions dating from the 1840s to the present day. Particularly suitable for Key Stage 2 teachers who teach pupils with special educational needs, the session includes a practical photography session and an introductory tour of the IT Gallery. The workshop complements elements of the National Curriculum and QCA's schemes of work in Art and Design History, Literacy and Science.



# Exhibitions

## EXHIBITIONS

### Gay Icons

- **Until 18 Oct 2009**
- Admission £5/  
Concessions £4.50 and £4
- Sponsored by  
Rosé d'Anjou wines

*Gay Icons* explores gay social and cultural history through the unique personal insights of ten high-profile gay figures, who have selected photographs of their historical and modern icons. The chosen icons, who may or may not be gay themselves, have all been important to each selector, having influenced their gay sensibilities or contributed to making them who they are today.

The selectors are: Waheed Alli, Alan Hollinghurst, Elton John, Jackie Kay, Billie Jean King, Ian McKellen, Chris Smith, Ben Summerskill, Sandi Toksvig and Sarah Waters.

### Beatles to Bowie: the 60s exposed

- **15 Oct 2009 – 24 Jan 2010**
- Admission £11/Concessions £10/£9
- Sponsored by The Bank of New York Mellon

Celebrating the leading pop music personalities and groups who helped create 'Swinging London' in the 1960s, the exhibition brings together 150 photographs and ephemera including record sleeves, illustrated sheet music and magazines.

### Taylor Wessing Photographic Portrait Prize 2009

- **5 Nov 2009 – 14 Feb 2010**
- Admission free
- Supported by Taylor Wessing

This exhibition showcases the work of the most talented emerging young photographers, photography students and gifted amateurs alongside that of established professionals. The international mix of entrants is reflected in the diversity of approaches to the portrait genre, encompassing reportage, advertising and fine art images.

**Pre-booked school groups get a special discounted admission rate for visits to charged exhibitions on Monday to Wednesday between 10.00 and 13.00.**



### Irving Penn Portraits

- 18 Feb – 31 May 2010
- Admission £10, Concessions £9/£8

One of the world's greatest photographers, portraiture has been a fundamental element of Irving Penn's prolific career. Spanning seventy years and featuring 120 prints, this major exhibition focuses on Penn's portraits of prominent cultural figures.

### BP Portrait Award 2010

- Jun to Sept 2010
- Supported by BP
- Admission free

The *BP Portrait Award* is the most prestigious portrait competition in the world, promoting the very best in contemporary portrait painting. With a first prize of £25,000, the exhibition has proved to be the launch pad for the careers of a number of successful portrait artists. This year's exhibition will present more than fifty selected portraits alongside the work of the *BP Travel Award 2009* winner.

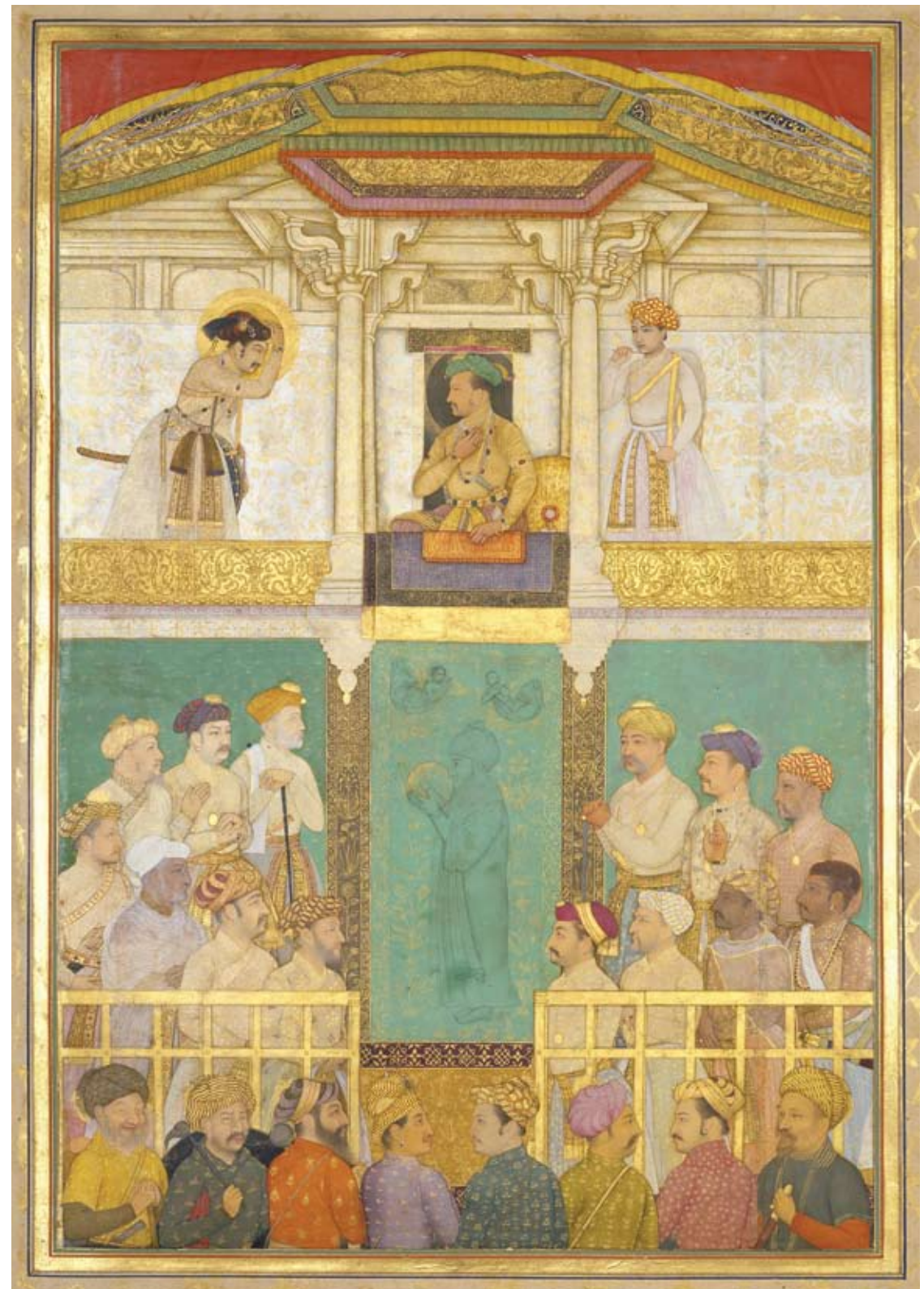
### The Indian Portrait 1560-1860

- 4 March – 13 June 2010
- Admission free

This major exhibition tells the story of the Indian portrait from 1560-1860. Developing from its origins at the Mughal court, portraiture spread to the Islamic sultanates of the Deccan and then to the small Hindu kingdoms in Rajasthan and the Punjab Hills.

The role of the portrait in India is many faceted – as an official chronicle or eye-witness account, and as a means of revealing the intimate moments of everyday life. This depicted the sitter, for the first time in Indian art, as a psychological entity, revealing their fallibility and compassion, or just simply how they really looked.

These paintings are a record of a rich and complex history, embracing influences from Iran and Europe as well as local Hindu and Muslim traditions. Bringing together sixty works, *The Indian Portrait* celebrates the beauty, power and humanity of these works of art, showing that the Indian portrait can stand shoulder to shoulder with outstanding examples of portraiture from around the world.



For full listings of our exhibitions and displays please see [www.npg.org.uk](http://www.npg.org.uk). Places are limited so please get in touch in advance to make your booking on 020 7312 2483



# Visits and bookings

## 'HOW TO BOOK' CHECKLIST

For bookings and information contact the Learning Bookings Line on 020 7312 2483 or [education@npg.org.uk](mailto:education@npg.org.uk)



Date and time of your visit, with alternatives if we can't accommodate your first choice



Type of visit – self-directed or a taught session?



Age and learning needs of your group



Numbers of pupils and accompanying adults. Please ensure that your adult: student ratio is at least 1:10



School details and contact information including full postal address, telephone and fax numbers

**Please note:** We are not able to take provisional bookings. You are welcome to make an email enquiry but please note bookings will be confirmed over the phone.



## OUR TIPS TO ENJOY YOUR VISIT

### Book in advance

Please book before you visit with us. Get in touch as early as possible to ensure we can accommodate your class. A minimum of one month's notice is preferred.

### Number of visits

Due to the popularity of our programmes, we can provide each school with three taught sessions for different classes each term. We can provide teachers' notes to help you run up to three further sessions yourselves.

### Taught sessions

Join our specialist freelance team for educator-led sessions in the gallery spaces or hands-on workshops. Book from our suggested sessions or devise your own.

### Self-directed visits

To run your own session, please contact us to book the relevant rooms.

### Admission charges

Admission to the Gallery is free. All taught sessions are free, unless otherwise noted. Some temporary exhibitions have an admission cost, please ask when you book for our special discount rates for pre-booked classes.

### Keep in touch

Join our Teachers' Email List to receive bulletins and updates.

### In the galleries

Guidelines are sent when you book, please read and discuss with your group. Group leaders are responsible for the behaviour of their classes during the visit.

### Facilities

Please note we have no parking or lunchroom facilities. Our booking team can advise you on alternatives.

### Cancellations

We reserve the right to apply a cancellation fee if sessions are cancelled after your booking is confirmed.

### Bookings and enquiries:

020 7312 2483 or [education@npg.org.uk](mailto:education@npg.org.uk)

**National Portrait Gallery**  
**St Martin's Place,**  
**London WC2H 0HE**

**Opening hours**

Open daily 10.00 – 18.00

Thursday and Friday  
until 21.00

Entry to the Gallery is free,  
an entry fee is charged for  
some exhibitions.

**Access Information**



Shop and bookshop  
entrance in St Martin's  
Place and the Orange  
Street ramp entrance are  
accessible. Wheelchairs,  
lifts and special guides  
are available.

