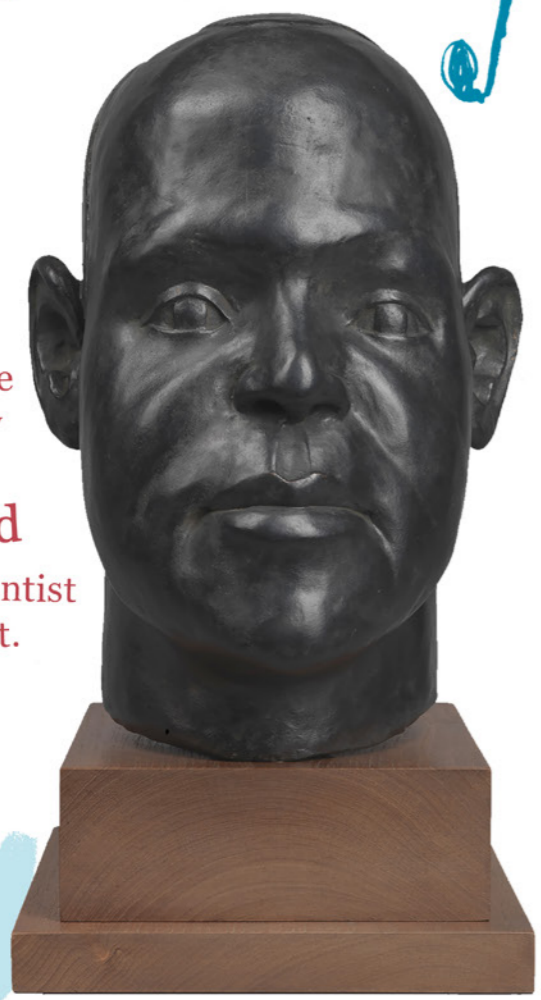


Harold Moody

1882-1947

Physician & Founder of the League of coloured people

This sculpture was made by his brother, **Ronald** who was a dentist and artist.



Harold moved to England from **Jamaica** to study to be a **doctor**.

But it wasn't easy for him because many people in Britain in the 1930s didn't like the colour of his skin.

Harold believed in fairness and treating people equally.

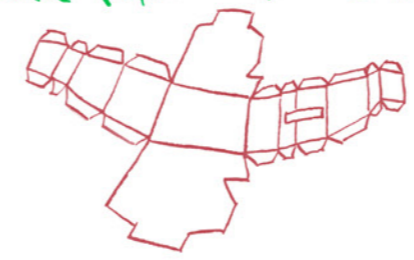
So he started a group to campaign to fight discrimination called the 'League of Coloured People'.

He wanted people of all races to be able to live and work together in harmony.

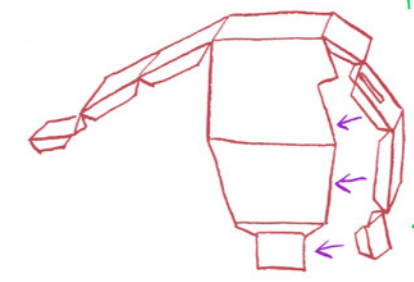
can you build your own head?

You WILL NEED: glue + scissors + patience!

① Cut out model from P29, and fold along the lines.

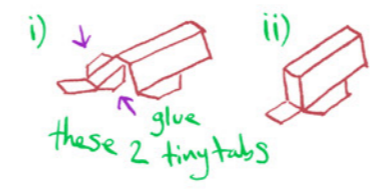


② Glue the tabs on the left side of the face and stick to the LEFT side of the head. Be careful to follow the profile.

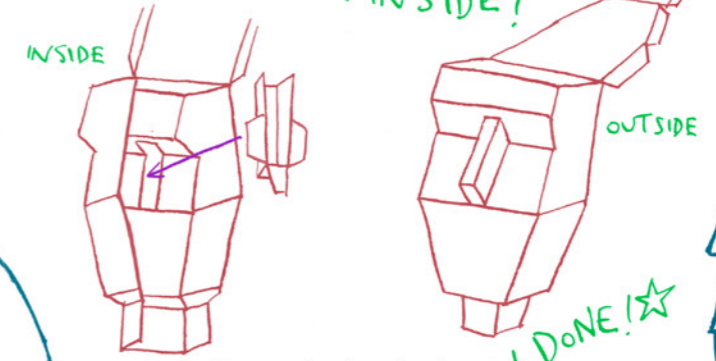


③ Then stick the right hand side in the same way.

④ Next glue the fiddly NOSE together.

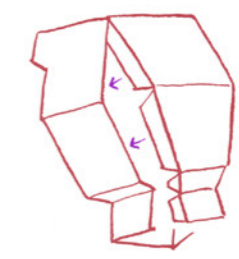


⑤ Now stick the nose into the face from INSIDE!



★ That's the hardest part DONE! ☆

⑥ Glue the tabs on the back of the head to the sides - one side at a time is easiest.



⑦ Lastly draw your face onto the model!

