

News Release

Thursday 13 December 2018

NATIONAL PORTRAIT GALLERY TO STAGE MAJOR NEW EXHIBITONS ON THE WOMEN WHO SHAPED PRE-RAPHAELITE ART AND ELIZABETH PEYTON'S PORTRAITS IN AUTUMN 2019



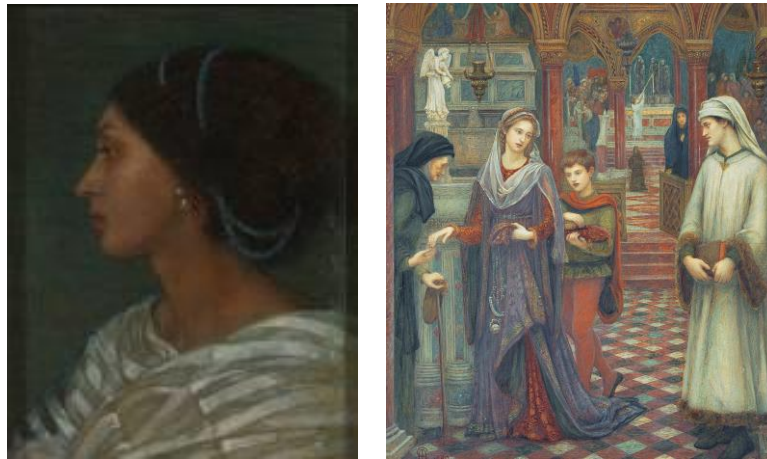
Images L-R: **Thou Bird of God** by Joanna Boyce Wells, 1861, Private Collection; Fanny Cornforth is the model for **The Blue Bower** by Dante Gabriel Rossetti, 1856, The Henry Barber Trust, the Barber Institute of Fine Arts, University of Birmingham; **Portrait at the Opera (Elizabeth)** by Elizabeth Peyton 2016 Courtesy The Brant Foundation, Greenwich, CT. USA © Elizabeth Peyton. Courtesy the artist and Gladstone Gallery, New York and Brussels / Photography by EPW Studio, NY

The National Portrait Gallery, London is to stage the first-ever major exhibition to focus on the untold story of the women of Pre-Raphaelite art as part of a 2019 autumn season that also includes the first exhibition situating leading contemporary artist Elizabeth Peyton within the historical tradition of portraiture. Both exhibitions will include works on public display for the first time in the UK.

160 years after the first pictures were exhibited by the Pre-Raphaelite Brotherhood in 1849, **Pre-Raphaelite Sisters** (17 October 2019 – 26 January 2020), explores the overlooked contribution of twelve women who contributed to the movement in different ways. Featuring new discoveries and unseen works from public and private collections across the world, the exhibition reveals the women behind the pictures and their creative roles in Pre-Raphaelite's successive phases between 1850 and 1900. Women, such as **Joanna Wells** (nee Boyce), a Pre-Raphaelite artist in her own right whose work has been largely omitted from the history of the movement, together with **Marie Spartali Stillman** and **Evelyn de Morgan**, whose art also shaped the development of Pre-Raphaelitism alongside their male counterparts. Previously unseen works including *The First Meeting of Petrarch and Laura* by Spartali Stillman, will be on public display for the first time alongside works such as *Thou Bird of God* by Wells, which hasn't been exhibited for over 25 years.

Through paintings, photographs, manuscripts and personal items, *Pre-Raphaelite Sisters* also explores the significant roles women played as models, muses and helpmeets who supported and sustained the artistic output of the Pre-

Raphaelite Brotherhood. The exhibition tells the story of **Annie Miller** and **Fanny Cornforth**, who inspired and modelled for some of the most famous Pre-Raphaelite Brotherhood paintings, and introduces Jamaican born model, **Fanny Eaton**, whose life story is presented in public for the first time.



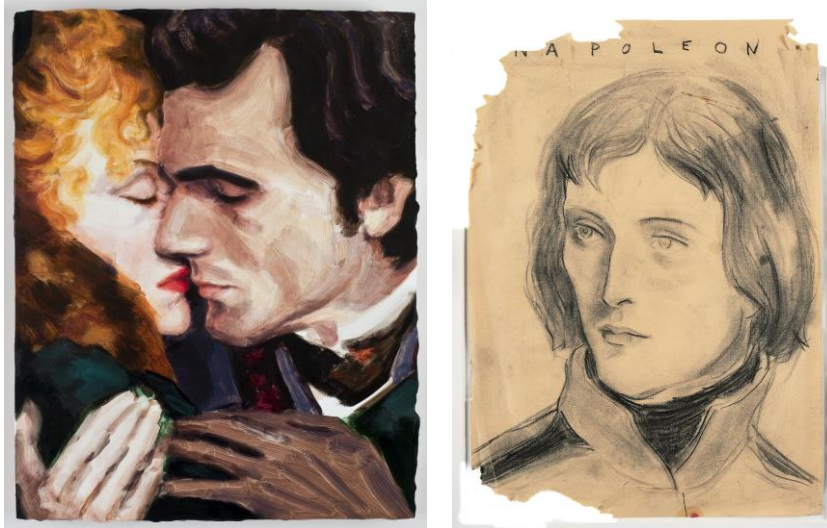
Images L-R **Fanny Eaton** by Joanna Wells, 1861. Yale Center for British Art, Paul Mellon Fund; **The First Meeting of Petrarch and Laura** by Marie Spartali Stillman, 1889. Private Collection. Photo © Peter Nahum at The Leicester Galleries

Also featured is **Christina Rossetti**, the poet of Pre-Raphaelitism and a model for early paintings, and **Effie Millais** (nee Gray) and **Georgiana Burne-Jones**, whose domestic support underpinned their husbands' artistic and social successes, while relinquishing their own ambitions in the process. For the first time **Elizabeth Siddal**, who famously modelled for John Everett Millais' *Ophelia*, is presented as an artist as well as a sitter, alongside **Jane Morris** and **Maria Zambaco** who also entered the art world as models, and later became individual muses and icons of the movement. Both Morris and Zambaco also created work of their own in pictures, embroidery and sculpture much of which will be on public display for the first time.

The Pre-Raphaelite Brotherhood were young men aiming to overturn the conventions of Victorian Art. As the self-styled 'Young Painters of England' they challenged the previous generation with startling hues and compositions inspired by early renaissance painting. The names of John Millais, William Holman Hunt, Dante Gabriel Rossetti, Edward Burne-Jones and William Morris are now well-known, and have become synonymous with the Romantic notion of the male genius. *Pre-Raphaelite Sisters* shows them in new light, both supportive of and dependent on the women in their lives and art.

Elizabeth Peyton (3 October 2019 – 5 January 2020), created in close collaboration with the artist, explores the development of Peyton's unique portraiture from the 1990s to the present day, presenting works in a range of media, including new portraits exhibited for the first time. In addition to over 40 works on display in the exhibition, Peyton will become the first artist ever to be given the run of the entire National Portrait Gallery, with a selection of her portraits dispersed throughout the permanent Collection, juxtaposing Peyton's paintings with historic portraits from the Tudor period onwards.

Elizabeth Peyton is one of the world's leading contemporary artists. Internationally renowned, her work has been at the forefront of a re-evaluation of figurative art and the tradition of portrait painting since the 1990s. The exhibition will include a selection of key portraits from the first two decades of her career, and investigate the new direction in her work over the last 10 years.



Images from L-R: **The Age of Innocence** by Elizabeth Peyton 2007 Courtesy The Brant Foundation, Greenwich, CT. USA © Elizabeth Peyton. Courtesy the artist and Gladstone Gallery, New York and Brussels; **Napoleon** by Elizabeth Peyton 1991 © Elizabeth Peyton, courtesy the artist and Sadie Coles HQ, London / Photography: Johansen Krause

Peyton treats her subjects with a distinctive intimacy, whether they are friends, historical figures, or cultural icons. Portraits on display from her diverse and ever-expanding repertoire of recurring subjects will include Kurt Cobain, Liam Gallagher, Frida Kahlo, Napoleon, Queen Elizabeth II, David Bowie, Phoebe Philo, David Hockney, Eva-Maria Westbroek and Jonas Kaufmann among others. Peyton has also made portraits after works by artists including Leonardo da Vinci, Eugène Delacroix, Gustave Courbet and Edward Burne-Jones, which will be included in the exhibition.

Peyton's recent works, derived both from life and from an increasingly wide range of secondary sources, including film, literature, music, visual art and opera, demonstrate how the artist has embraced a more expansive and abstract definition of portraiture over the last decade. The exhibition will look at the evolution of Peyton's practice, exploring her unique aesthetic and her interrogation of perception, emotion and human relationships.

Dr Nicholas Cullinan, Director, National Portrait Gallery London said: "I am delighted to announce these two new exhibitions for Autumn 2019, both of which will be viscerally beautiful and quietly political in highlighting the vital role women have played in shaping artistic movements and genres. I am particularly pleased to be collaborating with Elizabeth Peyton to bring her inimitable works to the National Portrait Gallery for the first time."

Dr Jan Marsh, Curator of Pre-Raphaelite Sisters said: "When people think of Pre-Raphaelitism they think of beautiful women with lustrous hair and loose gowns gazing soulfully from the picture frame or in dramatic scenes painted in glowing colours. Far from passive mannequins, as members of an immensely creative social circle, these women actively helped form the Pre-Raphaelite movement as we know it. It is time to acknowledge their agency and explore their contributions."

Lucy Dahlsen, Curator of *Elizabeth Peyton* said: "Over the last decade, Elizabeth Peyton has made a body of work that offers a highly sophisticated and personal exploration of portraiture. Her work, which is informed by an ever-expanding range of influences that cut across time and place, is born from an enduring desire to make pictures that tell us about love and human relationships."

Pre-Raphaelite Sisters is curated by Dr Jan Marsh, who pioneered the study of Pre-Raphaelite women with collective and individual biographies, including *Pre-Raphaelite Sisterhood, Jane and May Morris* and *Christina Rossetti: A Literary Life*. She co-curated exhibitions about Pre-Raphaelite Women Artists, Marie Spartali and May Morris.

Elizabeth Peyton is curated by Lucy Dahlsen, Associate Curator, National Portrait Gallery in collaboration with the artist. Lucy Dahlsen co-curated the exhibition *Michael Jackson: On the Wall*. She has curated displays of

contemporary artists including Njideka Akunyili Crosby, Samuel Fosso, Luc Tuymans and Thomas Price. Previous exhibitions she has worked on include *Howard Hodgkin: Absent Friends* and *Giacometti: Pure Presence*.

***Pre-Raphaelite Sisters*, 17 October 2019 – 26 January 2020, National Portrait Gallery, London www.npg.org.uk**

Press View: Wednesday 16 October 2019

Tickets without donation £18

Free for Members and Patrons

npg.org.uk/pre-raphaelitesisters

***Elizabeth Peyton*, 3 October 2019 – 5 January 2020, National Portrait Gallery, London www.npg.org.uk**

Press View: Wednesday 2 October 2019

FREE admission

npg.org.uk/elizabethpeyton

The exhibition will tour to The Museum of National History, Frederiksborg Castle, Denmark, in Spring 2020 and to UCCA, Beijing.

Publications

Pre-Raphaelite Sisters will be accompanied by a beautifully illustrated catalogue, available in both hardback and paperback formats, which will feature an introduction to the main themes, followed by illustrated biographies of all twelve women who helped form the movement that feature in the exhibition. The paperback will be exclusive to the Gallery shop and website.

The accompanying publication to the *Elizabeth Peyton* exhibition will look at the evolution of Peyton's practice over the past ten years, and explore her unique aesthetic and her interrogation of perception, emotion and human relationships.

For further press information please contact: Laura McKechnan, Senior Communications Manager, National Portrait Gallery, Tel. 020 7321 6620, lmckechnan@npg.org.uk

National Portrait Gallery 2019 Exhibitions

Elizabethan Treasures: Miniatures by Hilliard and Oliver

21 February - 19 May 2019

Press View: Wednesday 20 February 2019



The first major exhibition on Tudor and Jacobean portrait miniatures in the UK for over 35 years, ***Elizabethan Treasures: Miniatures by Hilliard and Oliver*** will bring together key works from the National Portrait Gallery and major loans from public and private collections to showcase the careers of the most skilled artists of the period, Nicholas Hilliard (1547? – 1619) and Isaac Oliver (c.1565 – 1617). The exhibition will explore what these exquisite images reveal about identity, society and visual culture in Elizabethan and Jacobean England.

Tickets without donation: £10.00

Spring Season 2019 sponsored by Herbert Smith Freehills LLP

Only Human: Photographs by Martin Parr

7 March – 27 May 2019

Press View: Wednesday 6 March 2019



A major new exhibition of works by Martin Parr, one of Britain's best-known and most widely celebrated photographers. **Only Human: Martin Parr**, brings together some of Parr's best known photographs with a number of works never exhibited before to focus on one of his most engaging subjects – people. The exhibition will include portraits of people from around the world, with a special focus on Parr's wry observations of Britishness, explored through a series of projects that investigate British identity today, including new works which reveal Parr's take on the social climate in Britain in the aftermath of the EU referendum.

Tickets without donation: £18.00

Spring Season 2019 sponsored by Herbert Smith Freehills LLP

BP Portrait Award 2019

13 June – 20 October 2019

Press View: Wednesday 12 June 2019



2019 will mark the *Portrait Award's* 40th year at the National Portrait Gallery and 30th year of sponsorship by BP. This highly successful annual event is aimed at encouraging artists over the age of eighteen to focus upon, and develop, the theme of portraiture in their work. The increasingly popular competition has a huge international reach, with the *BP Portrait Award 2018* receiving 2,667 entries from 88 countries. The exhibition, which featured 48 paintings, was seen by 275,295 people at the National Portrait Gallery.

Free Admission

Cindy Sherman

27 June – 15 September 2019

Press View: Wednesday 26 June 2019



A major new retrospective of works by leading contemporary artist Cindy Sherman, including the complete *Untitled Film Stills* series, 1977-80, which will go on public display for the first time in the UK. This major new exhibition will explore the development of Sherman's work from the mid-1970s to the present day, featuring around 150 works from international public and private collections, as well as new work never before displayed in a public gallery. Focusing on the artist's manipulation of her own appearance and her deployment of material derived from a range of cultural sources, including film, advertising and fashion, the exhibition will explore the tension between façade and identity.

Elizabeth Peyton

3 October 2019 – 5 January 2020

See main release

Pre-Raphaelite Sisters

17 October 2019 – 26 January 2020

See main release

Taylor Wessing Photographic Portrait Prize 2019

7 November 2019 - 16 February 2020

Press View: Wednesday 6 November 2019



The Taylor Wessing Photographic Portrait Prize is the leading international competition, open to all, which celebrates and promotes the very best in contemporary portrait photography from around the world. Showcasing talented young photographers, gifted amateurs and established professionals, the competition features a diverse range of images and tells the often fascinating stories behind the creation of the works, from formal commissioned portraits to more spontaneous and intimate moments capturing friends and family.

Tickets without donation: £5.00

Sponsored by Taylor Wessing

National Portrait Gallery, St Martin's Place WC2H 0HE, opening hours Monday, Tuesday, Wednesday, Saturday, Sunday: 10.00 – 18.00 (Gallery closure commences at 17.50) **Late Opening:** Friday: 10.00 – 21.00 (Gallery closure commences at 8.50pm) **Nearest Underground:** Leicester Square/Charing Cross **General information:** 0207 306 0055 **Recorded information:** 020 7312 2463 **Website** www.npg.org.uk