

Floor Information

Floor 4

Restaurant

Floor 3

Duveen Wing, Ondaatje Wing

1300 - 1850

Tudors 1-2

Civil War 4-6

Global Britain 10-12

Regency, Romantics & Reform 15-18

Floor 2

Blavatnik Wing, Duveen Wing, Ondaatje Wing

1850 - 2000

Victorians 19-23

Towards the Second World War 25-27

Making a Modern Nation 28

Floor 1

Weston Wing

2000 - today

Contemporary 29-32

Floor 0

Duveen Wing, Ondaatje Wing

History Makers Now 33

Exhibition

Floor -1

Weston Wing

Café

Floor -2

Ondaatje Wing

The Simon & Mildred Palley Learning Centre

The Law Photography Studio

Ondaatje Wing Theatre

Floor -3

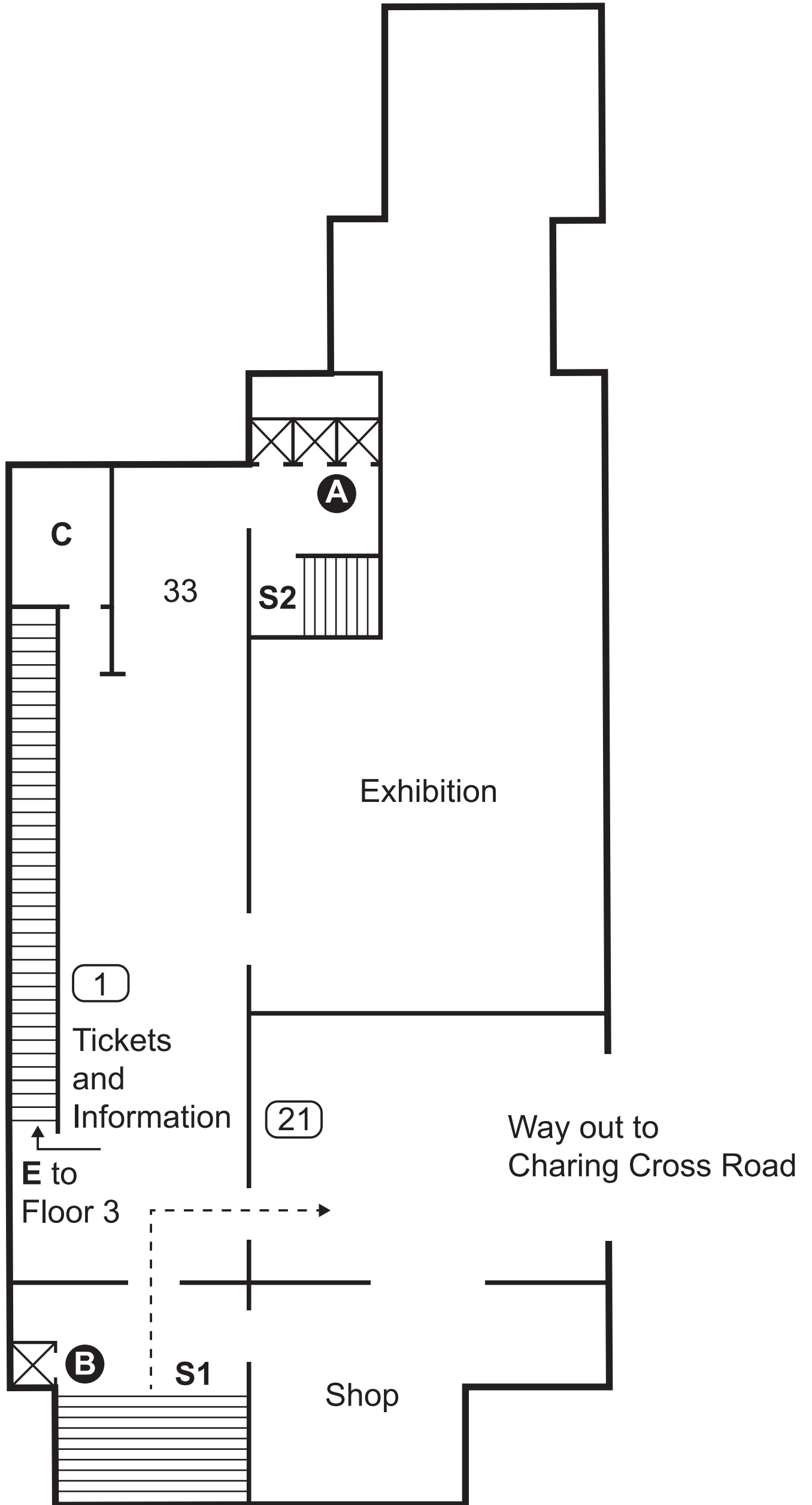
Café Bar

The Art Studio

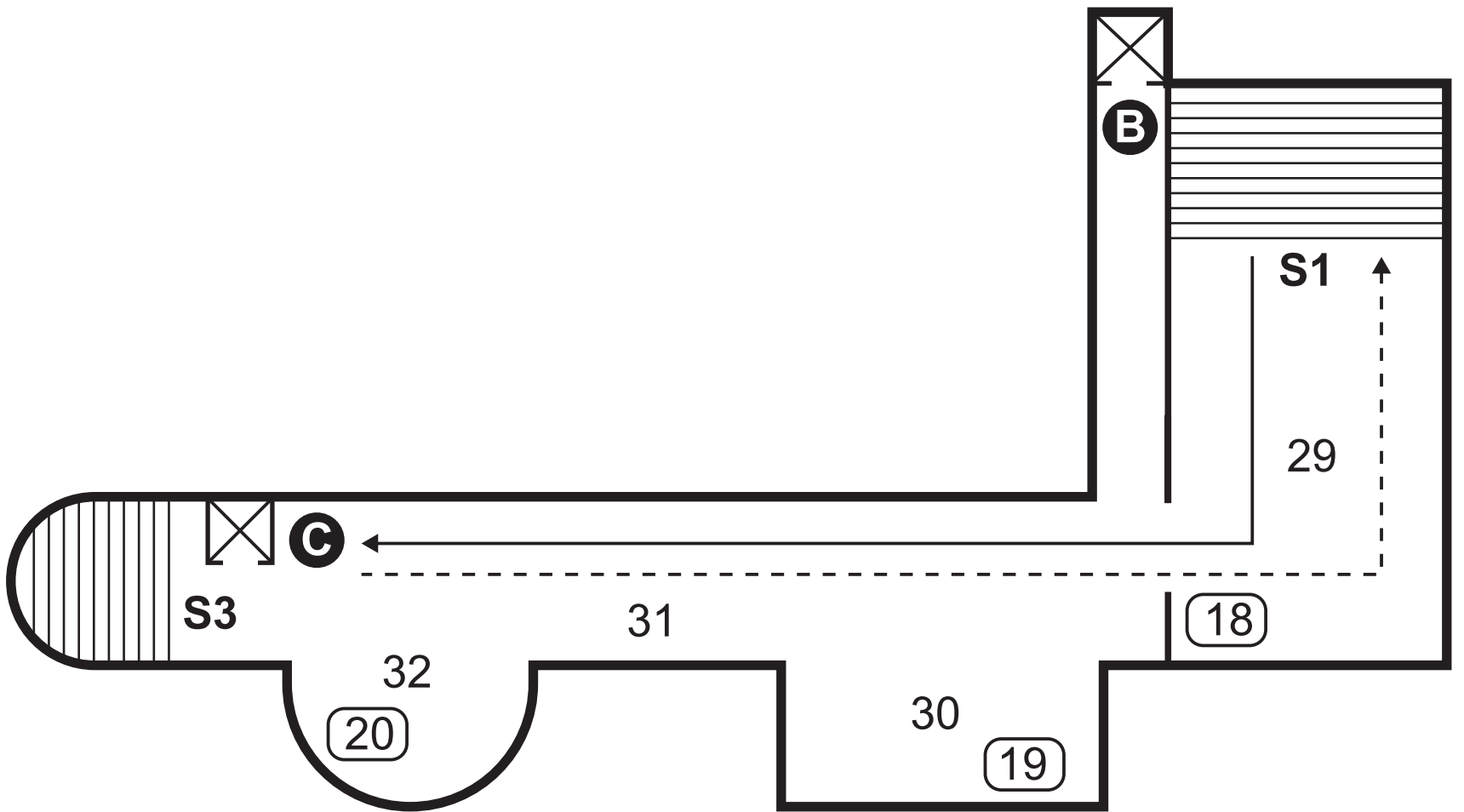
Stops:

- ① Stop 1 - Introduction to 'Meet the portraits'
- ② Stop 2 - Queen Elizabeth I
- ③ Stop 3 - William Shakespeare
- ④ Stop 4 - Sir Anthony van Dyck
- ⑤ Stop 5 - The Kit-cat club portraits
- ⑥ Stop 6 - Thayendanega (Joseph Brant)
- ⑦ Stop 7 - Mary Wollstonecraft
- ⑧ Stop 8 - Ada Lovelace
- ⑨ Stop 9 - A rage for portraits: room 18
- ⑩ Stop 10 - Harold Moody
- ⑪ Stop 11 - The Brontë sisters
- ⑫ Stop 12 - Mary Seacole
- ⑬ Stop 13 - Aina (named Sarah Forbes Bonetta)
- ⑭ Stop 14 - Oscar Wilde
- ⑮ Stop 15 - Laura Knight with model Ella Louise Naper
- ⑯ Stop 16 - Wall of pop (Spice Girls)
- ⑰ Stop 17 - Mala Sen and Chomok Ali Noor
- ⑱ Stop 18 - Gluck
- ⑲ Stop 19 - Zadie Smith
- ⑳ Stop 20 - Marc Quinn and Tracey Emin
- ㉑ Stop 21 - Sculpture of 'Reaching Out'

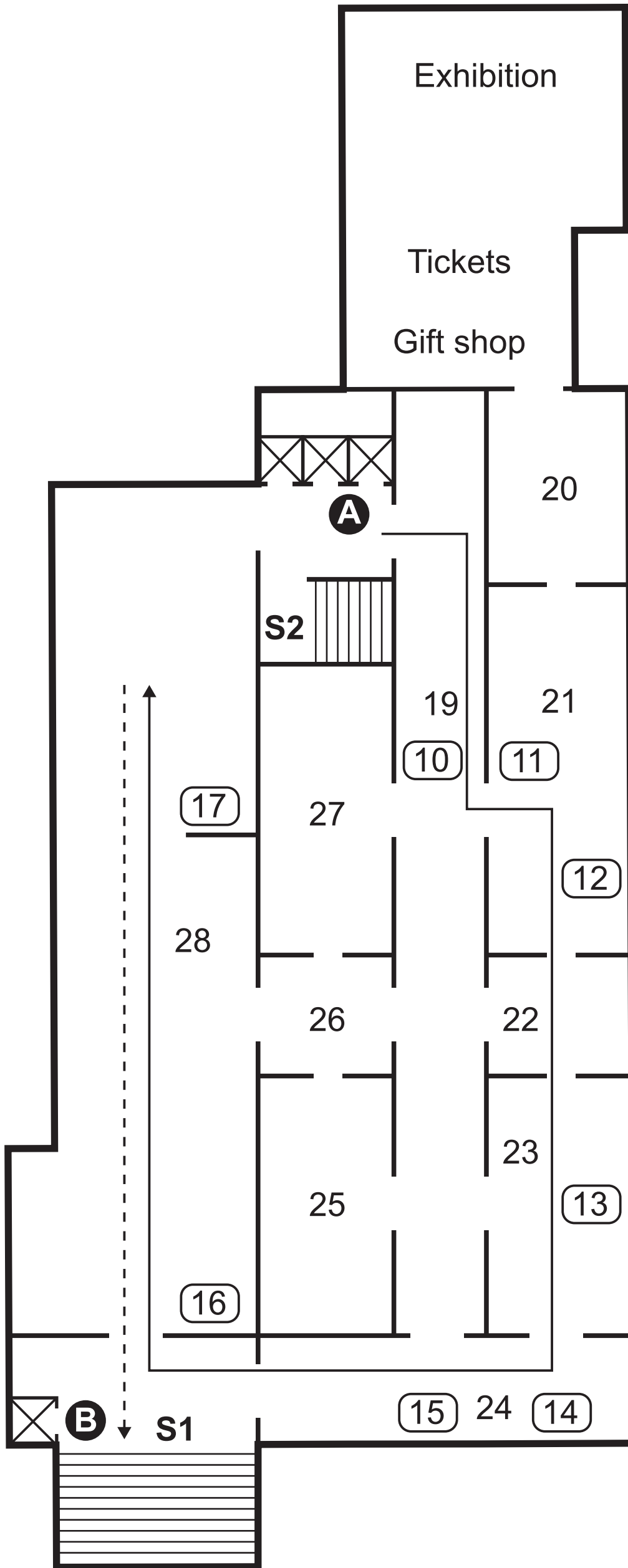
Floor 0



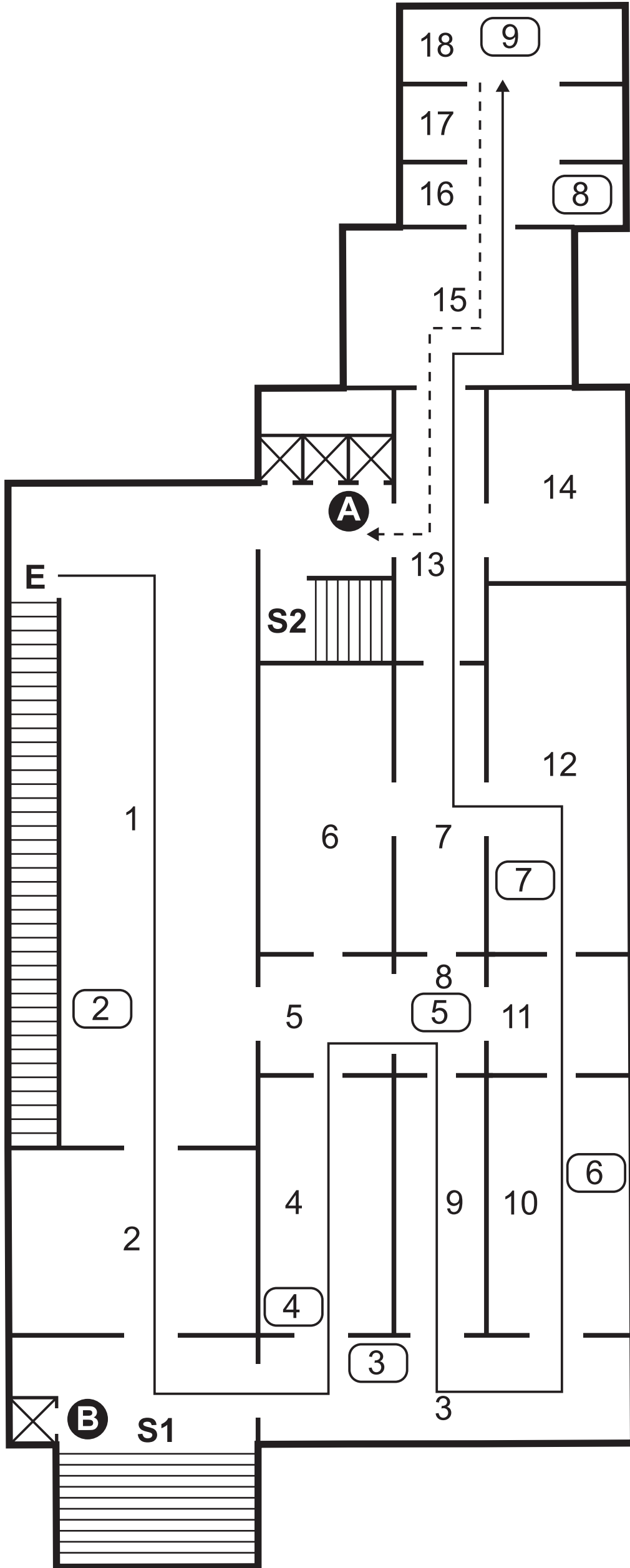
Floor 1



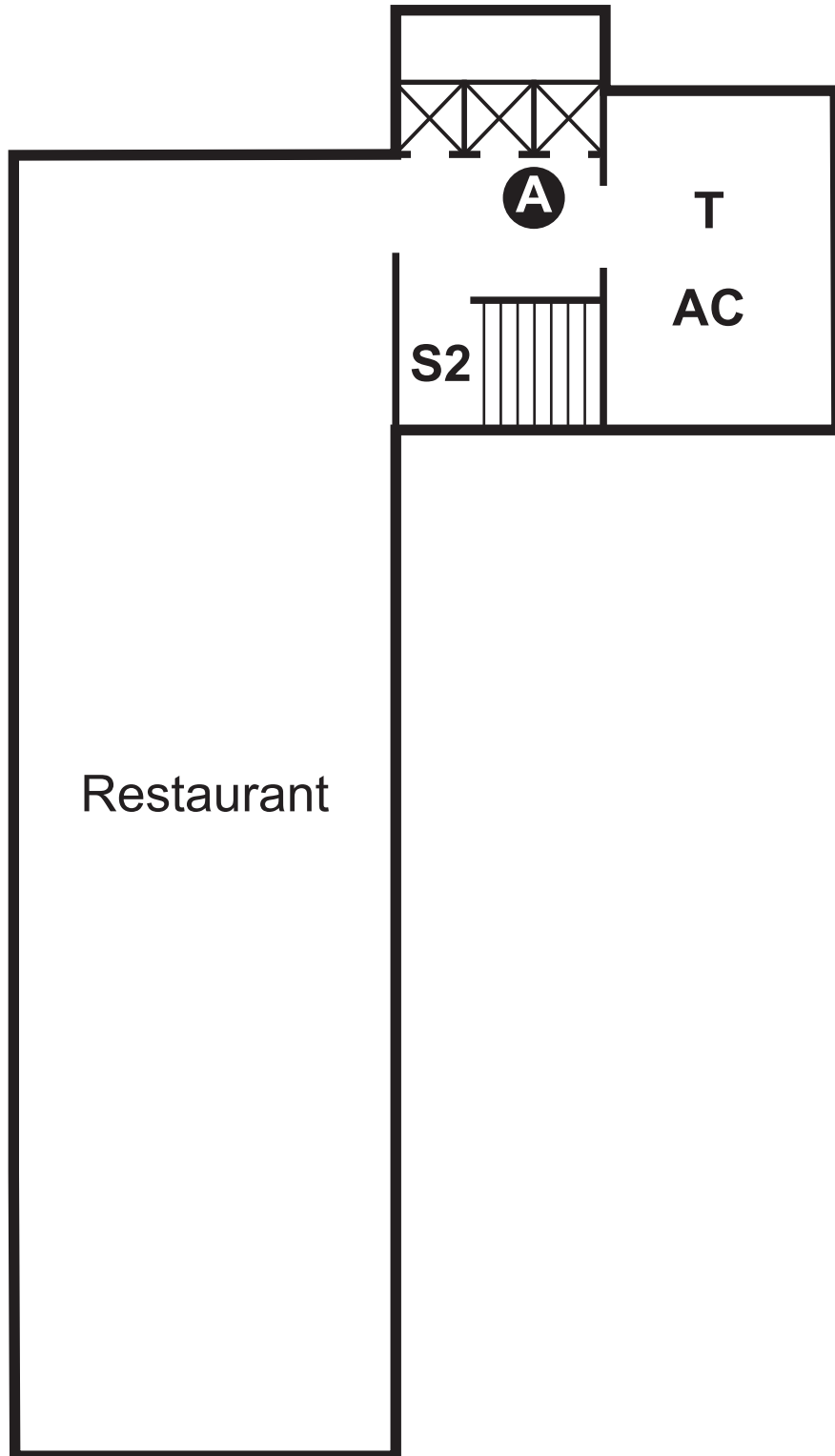
Floor 2



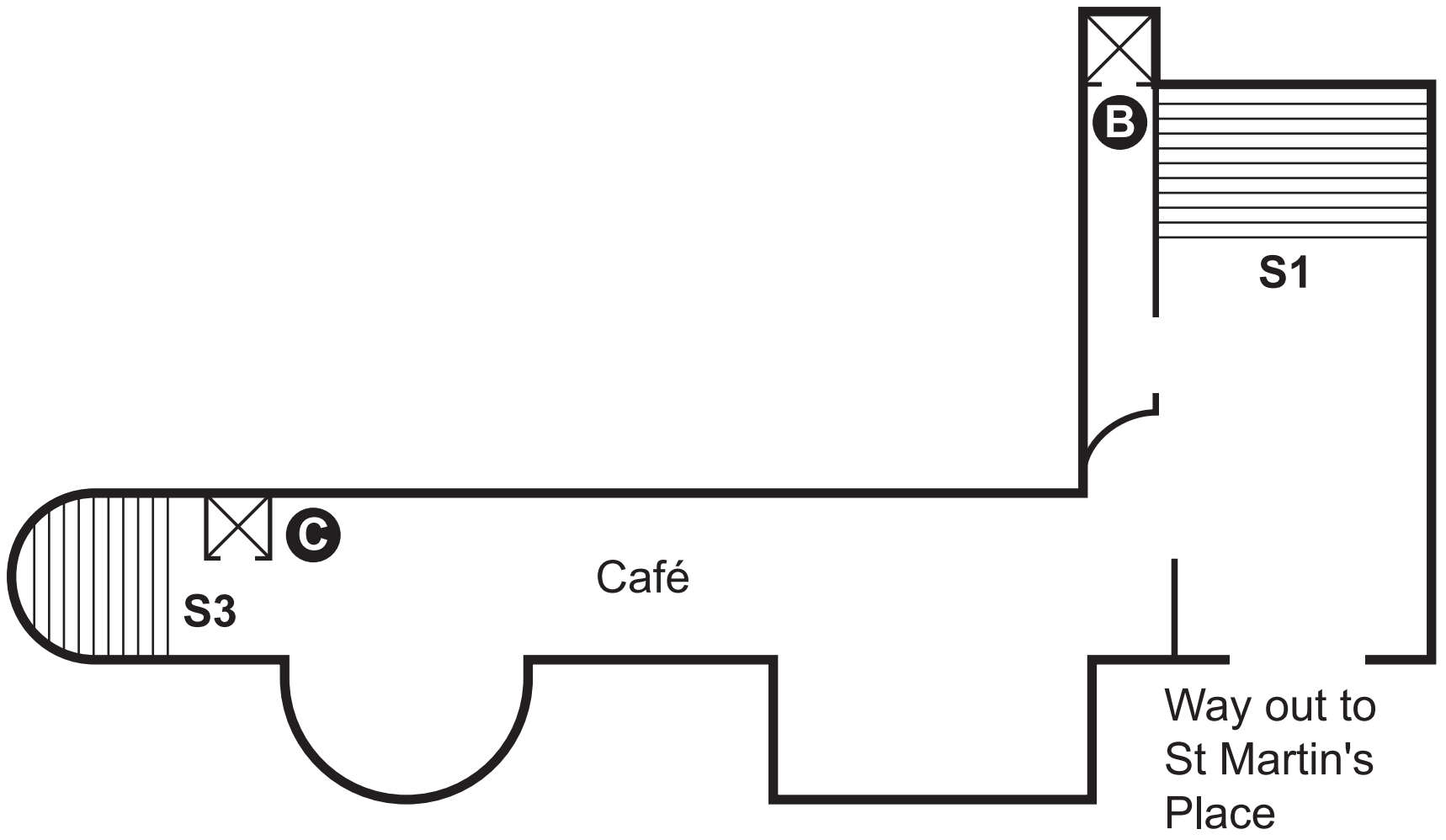
Floor 3



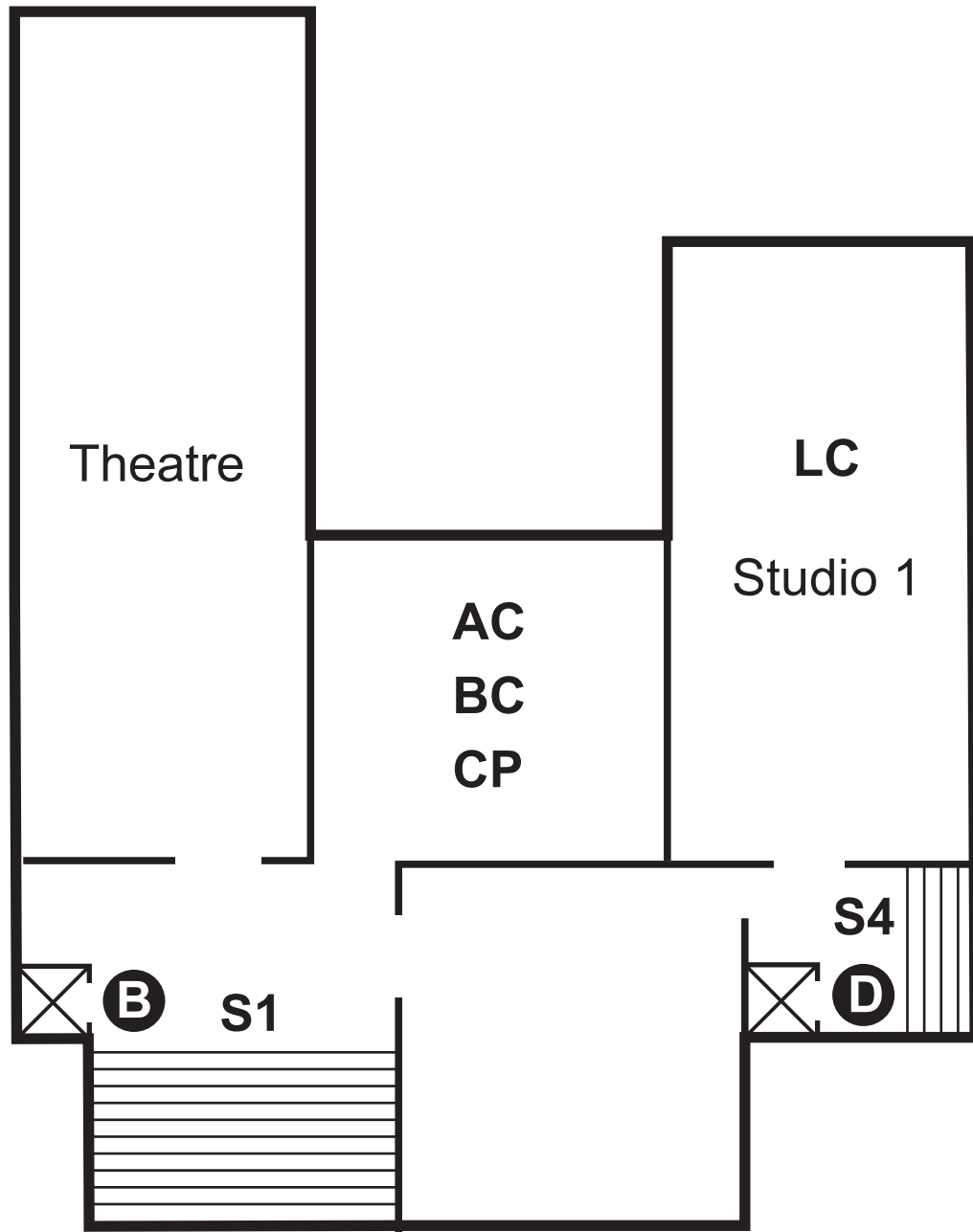
Floor 4



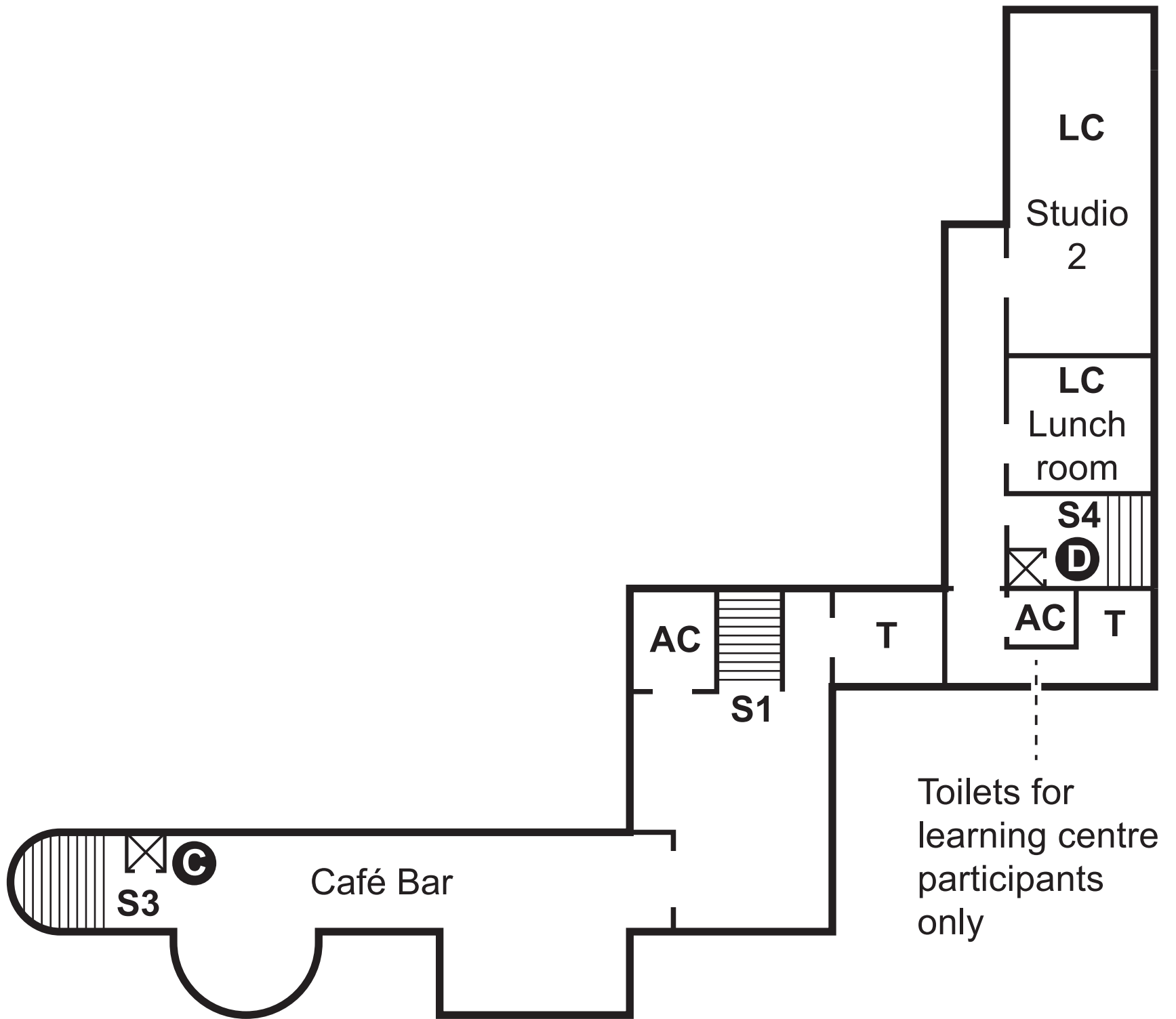
Floor -1



Floor -2



Floor -3



Key to all plans:

 External wall

 Internal wall

 Lift

 Stairs

 Walking direction through floor

 Walking direction to next floor

AC Accessible toilets

BC Baby change

C Cloakroom

CP Changing Places

E Escalator from floor 0 to floor 3

LC Learning Centre

S1 Stairs between floors 3 - -3

S2 Stairs between floors 4, 3, 2 and 0

S3 Stairs between floors 1, -1, -3

S4 Stairs between floors -2 - -3

T Toilets (male, female)

A Lift between floors 4 - 0 [left-hand lift is staff only]

B Lift between floors 3 - -2

C Lift between floors 1, -1, -3

D Lift between floors -2 - -3